

# OWNER'S MANUAL

## VENDING CARTS

This owner's manual applies to all variations of the following Vending Cart Models:

### **CVC75**

Vending Cart with 12" Safety Barrier

### **CVC75B**

Base Unit



**Congratulations on the purchase of your new Vending Cart. This Owner's Manual provides you with a step by step guide to assembling and maintaining a Vending Cart. If you have any further questions, please do not hesitate to contact us, visit our website at [www.cambro.com](http://www.cambro.com) or call our Customer Service Dept. (800) 833-3003.**



**CVC75**



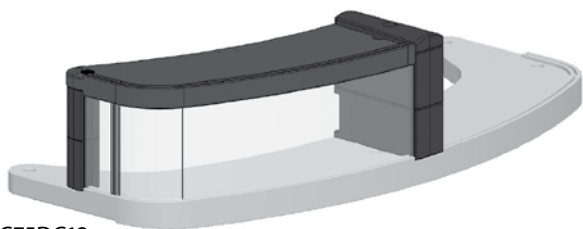
**CVC75B**



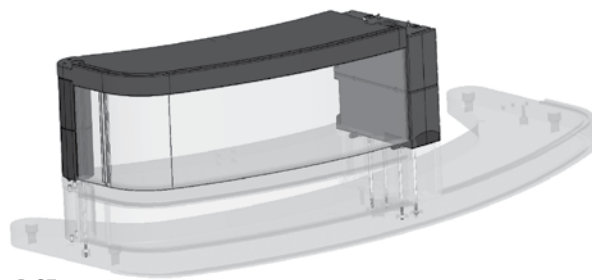
# CAMBRO®

[www.cambro.com](http://www.cambro.com)

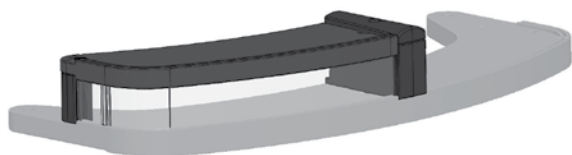
## I. Extender Installation / Side Shelves



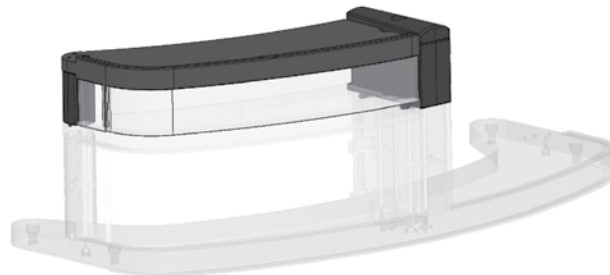
CVC75DC12



CVC75DCE12

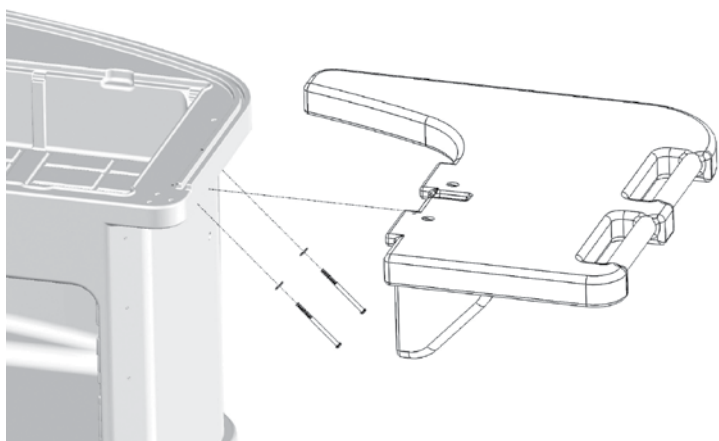


CVC75DC6

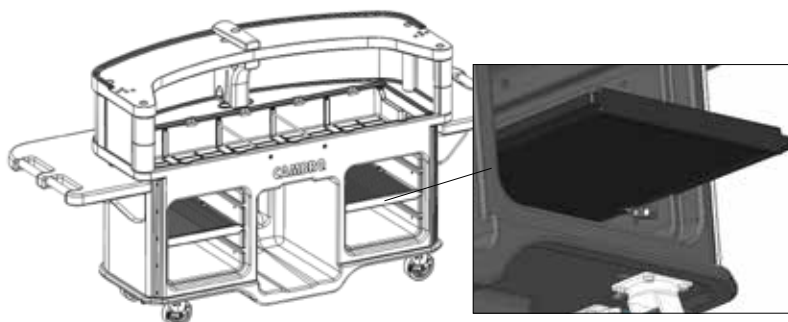


CVC75DCE6

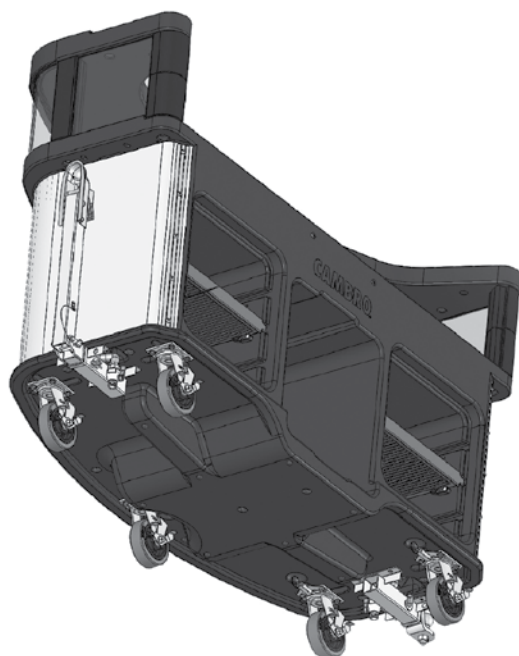
## II. End Table CVC75LET and CVC75RET Installation



## III. Base Shelves CVC75LSRL Installation



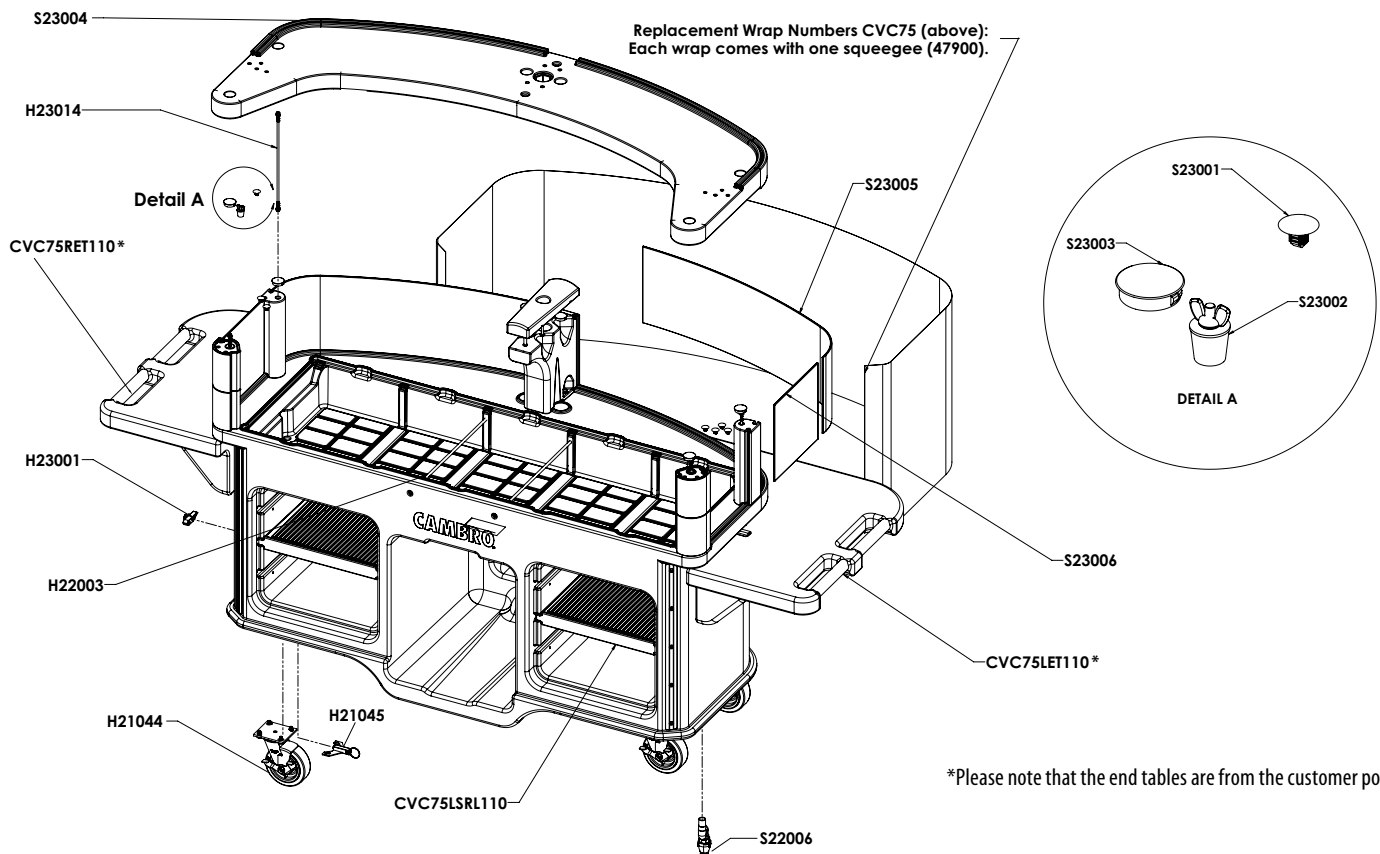
## IV. Optional Tow Hitch



## V. Part List

CODE	DESCRIPTION	QTY.
CVC75LSRL110	Roto-Molded Lower Shelves Packaged Separately with Pawl, Shoulder Screw and Tool (not shown)	2
S23004	Roto-Molded Main Shelf	1
CVC75LET110	Left End Table	1
CVC75RET110	Right End Table	1
H22010	12" Front Window	1
H22011	6" Side Window	1
H23001	Lower Shelf Pawl Kit	2
H21044	CSTR 6 x 2 Flt Trd SWB Prem	5
H22003	6061-T6 Aluminum Anodized Black with 10-32 X 1.0" Threaded Holes at Each End	2
S23005	CVC75 12" Front Window	2
S23006	12.55" X 12" Side Window	2
H23014	CVC75 .25" 304 SS rod x 15.5" threaded x 1.5" at each end	4
H21045	Caster Swivel Lock for Large Pattern Mounts	2
S23001	Plastic Snap-in Panel Plug, Black	12
S23002	Tapered Test Plug, Rubber	1
S23003	Plastic Panel Plug, Black	4
S22006	PVC Drain Assembly Installed Before Foaming	2
<b>CODE</b>	<b>WRAP DESIGNS</b>	<b>1</b>
H23002	Wrap Blue Print CVC75	1
H23003	Wrap Carbon Fiber Print CVC75	1
H23004	Wrap Fruit and Vegetable Print CVC75	1
H23005	Wrap Green Print CVC75	1
H23006	Wrap Red Print CVC75	1
H23007	Wrap Black Custom Print CVC75	1
H23008	Wrap Blue Custom Print CVC75	1
H23009	Wrap Custom Print CVC75	1
H23010	Wrap Fruit and Vegetable Custom CVC75	1
H23011	Wrap Green Custom Print CVC75	1
H23012	Wrap Healthy Choices Print CVC75	1
H23013	Wrap Red Custom Print CVC75	1

## VI. Assembly



## X. Maintenance and Cleaning

The Cambro Vending Cart should be cleaned regularly. Additionally, it should be cleaned before using if it has been idle for 5 days or more.

### Vending Cart Body/Display Case/Extender/Compartments

Steam clean or wash with warm soapy water and a soft plastic or bristle brush. **NEVER** use a metal brush or abrasive cleaner. Scrub with brush, and rinse thoroughly with clean water. If staining occurs, any standard de-stainer such as Ecolab's "Dip It" should be used.

### Clear Plastic Sneeze Guard Shield

Wash the clear plastic shield with warm soapy water. Rinse thoroughly. Dry with soft cloth or soft paper towel.

### **NEVER** use alcohol, i.e. Windex, abrasives, any type of solvent or acetone

Alcohol based cleaners will cause the shield to crack.

## CASTERS

Caster maintenance should be performed after every cleaning.

1. Grease swivel raceway of caster using a lubricant such as Lubriplate #930-AA, Keystone #84EPXLT multi-purpose grease or equivalent. Apply grease using a grease gun with a needle nose adapter or a tube-type applicator such as Sta-lube Moly-graph Assembly Lube (Fig.6). These can be obtained at most auto parts stores.
2. Use a light oil such as WD-40 on the hub (Fig.7). Check caster for damage and test caster spin and swivel rotation before returning to service.



Fig. 6



Fig. 7



Scan to view video on adjusting CVC Caster to fixed or swivel position.

## OPTIONAL ACCESSORIES

CODE	DESCRIPTION
CVC75LET	Left end table
CVC75RET	Right end table
CVC75DC6	6" tall display case
CVC75DC12	12" tall display case
CVC75DCE6	6" tall display case extender
CVC75DCE12	12" tall display case extender
CVC75LSRL	Lower shelves, set of 2

Case Pack: 1 CVC75LSRL Case Pack: 2

## COMPLEMENTARY ACCESSORIES

CODE	DESCRIPTION	OVERALL DIMENSIONS L x W x H
UPC300	Ultra pan carrier	17" x 25 $\frac{3}{4}$ " x 22 $\frac{3}{8}$ "
EPP300	Cam GoBox® front loader	25.2" x 17.3" x 18.7"
EPP140	Cam GoBox top loader	23.6" x 15.7" x 8.5"
EPP160	Cam GoBox top loader	23.6" x 15.7" x 10"
EPPFLID	Flip lid for Cam GoBoxes	23.6" x 15.7" x 1.6"
CB1220	Cutting Board	21" x 13 $\frac{1}{8}$ " x $\frac{1}{2}$ "
CPB1220	Buffet Camchiller®	18 $\frac{1}{2}$ " x 12 $\frac{5}{8}$ " x 4"
DIV12	12" Divider Bar	12 $\frac{3}{4}$ " L
DIV20	20" Divider Bar	20 $\frac{7}{8}$ " L
VBRWC	Versa Well Cover	20 $\frac{7}{8}$ " x 13" x 2"
CPH3	Crock holder	12 $\frac{7}{8}$ " x 20 $\frac{7}{8}$ "
SBH15	Salad bowl holder for 15" bowl	25 $\frac{3}{4}$ " x 20 $\frac{7}{8}$ "
SBH18	Salad bowl holder for 18" bowl	25 $\frac{3}{4}$ " x 20 $\frac{7}{8}$ "

Case Pack: 1 DIV12 and DIV20 Case Pack: 3

## XI. Replacement Parts

Please visit [www.cambro.com](http://www.cambro.com) for a complete list of replacement parts. The model number of the Cambro Vending Cart is required to determine the correct replacement part.

### TO ORDER REPLACEMENT PARTS:

- Call Cambro Customer Service at 800 833 3003 or
- Call International 714 848 1555
- Fax your order to 714 842 3430 or
- Call your local Cambro Representative or Distributor

## XII. Warranty

Cambro warrants to the original buyer that if a product proves defective:

1. Within 1 year from the date of manufacture, Cambro will replace the product free of charge; or,
2. After 1 year and up to 2 years from the date of manufacture, Cambro will grant a credit of 2/3 off replacement product; or,
3. After 2 years and up to 3 years from the date of manufacture, Cambro will grant a credit of 1/3 of the original price towards a replacement product.



Customer Service 800 833 3003  
© Cambro Manufacturing Company, Huntington Beach, California 92647  
Printed in USA 08/23

UMCVC75  
REV C

D082302