

EVERSTEEL™



The reliability of T&S, now in **PREMIUM STAINLESS STEEL**

EVERSTEEL™

The reliability of T&S, now in
PREMIUM STAINLESS STEEL



T&S' EVERSTEEL LINE: A CLASS BY ITSELF



- ✓ Superior-grade stainless steel
- ✓ Unparalleled build quality
- ✓ Surprisingly affordable
- ✓ Lifetime warranty



T&S' EVERSTEEL OPTIONS ARE AVAILABLE IN:

- Manual faucets
- Pre-rinse units
- Low profile pre-rinse units
- Spray valves
- Glass fillers
- Accessories



DESIGNED TO MEET THE FOLLOWING COMPLIANCE/CERTIFICATIONS

NORTH AMERICA

- ASME A112.18.1 / CSA B125.1
- NSF 61
- NSF 372

GLOBAL (ongoing)

- DVGW
- PUB
- WaterMark
- SASO



EverSteel standard and low profile pre-rinse units feature the **NEW STAINLESS STEEL S-0107-Y SPRAY VALVE**, a new patented design with more cleaning power and the highest durability of any spray valve on the market.

EVERSTEEL™

Designed to last



PRE-RINSE UNITS

PENDING GLOBAL CERTIFICATIONS

Designed to meet all global certification requirements, including SASO, WaterMark, PUB, CSA, NSF and DVGW

LEAD-FREE

Stainless-steel construction is completely lead-free for worry-free performance

BRUSHED SATIN FINISH

ADD-ON FAUCETS

Models available with and without

TRUE STAINLESS STEEL

Heavy-duty construction with stainless steel provides commercial-duty durability

EASY TO CLEAN

Stainless steel resists staining and water spots

PROVEN T&S DESIGN

EverSteel uses time-tested T&S designs to provide long-lasting reliability

NEW S-0107-Y SPRAY VALVE

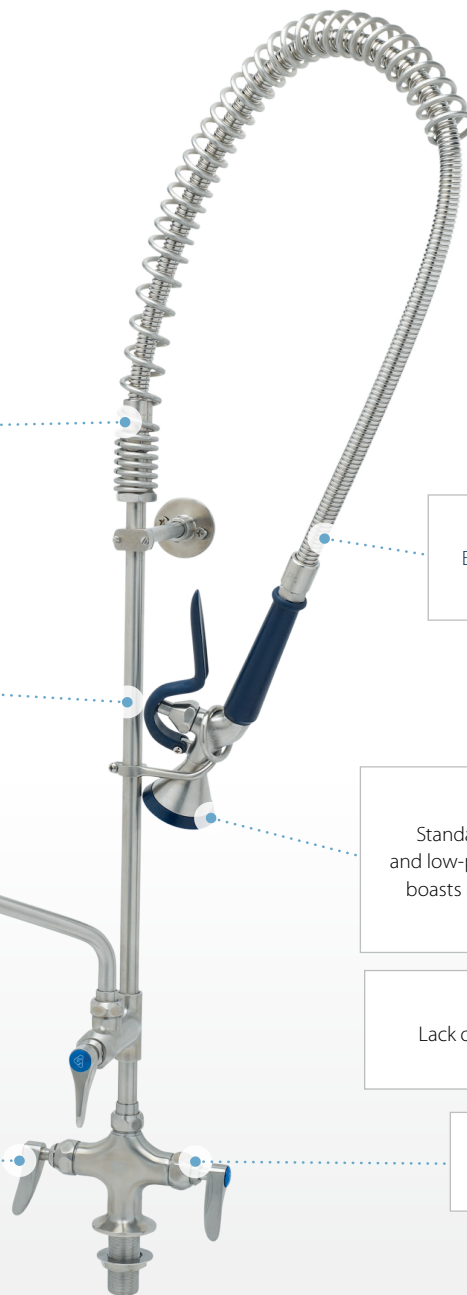
Standard on U.S. and Canada pre-rinse units and low-profile pre-rinse units, this new design boasts more cleaning power and the highest durability on the market

S-0107-Y

Lack of center screw prevents overtightening and there are fewer replaceable parts.

QUARTER-TURN CARTRIDGES

With built-in cross-flow prevention



COMMERCIAL-DUTY CONSTRUCTION
with professional-grade materials provides long-lasting durability.



LIFETIME COMPREHENSIVE WARRANTY
for assurance and peace of mind.



LOW-PROFILE MODELS
available to fit smaller spaces.



GLOBAL SHIPPING
T&S products available worldwide.



A NEW CLASSIC
Same design as classic T&S pre-rinse units, now in true stainless steel.

STAINLESS STEEL PRE-RINSE UNITS

S-0113-BY

- Single hole deck-mount mixing faucet
- EasyInstall riser for quick installation
- 44" flexible hose with heat resistant handle
- 1.15 GPM spray valve (S-0107-Y)
- Quarter-turn Eterna cartridges with spring checks
- Lever handles with color coded indexes
- 6" adjustable wall bracket
- 18" flexible supply hoses with G1/2" female swivel connections



S-0113-A12-B

- Single hole deck-mount mixing faucet
- EasyInstall add-on faucet
- 12" swing nozzle with stream regulator outlet, Series 1
- 44" flexible hose with heat resistant handle
- 1.15 GPM spray valve (S-0107)
- Quarter-turn Eterna cartridges with spring checks
- Lever handles with color coded indexes
- 6" adjustable wall bracket
- 18" flexible supply hoses with G1/2" female swivel connections



S-0113-A12-BY

- Single hole deck-mount mixing faucet
- EasyInstall add-on faucet
- 12" swing nozzle with stream regulator outlet, Series 1
- 44" flexible hose with heat resistant handle
- 1.15 GPM spray valve (S-0107-Y)
- Quarter-turn Eterna cartridges with spring checks
- Lever handles with color coded indexes
- 6" adjustable wall bracket
- 18" flexible supply hoses with G1/2" female swivel connections



S-0113-BJ

- Single hole deck-mount mixing faucet
- EasyInstall riser for quick installation
- 44" flexible hose with heat resistant handle
- 1.07 GPM spray valve (S-0107-J)
- Quarter-turn Eterna cartridges with spring checks
- Lever handles with color coded indexes
- 6" adjustable wall bracket
- 18" flexible supply hoses with G1/2" female swivel connections



S-0113-B

- Single hole deck-mount mixing faucet
- EasyInstall riser for quick installation
- 44" flexible hose with heat resistant handle
- 1.15 GPM spray valve (S-0107)
- Quarter-turn Eterna cartridges with spring checks
- Lever handles with color coded indexes
- 6" adjustable wall bracket
- 18" flexible supply hoses with G1/2" female swivel connections



S-0113-A12-BJ

- Single hole deck-mount mixing faucet
- EasyInstall add-on faucet
- 12" swing nozzle with stream regulator outlet, Series 1
- 24" rigid riser
- 44" flexible hose with heat resistant handle
- 1.07 GPM spray valve (S-0107-J)
- Quarter-turn Eterna cartridges with spring checks
- Lever handles with color coded indexes
- 6" adjustable wall bracket
- 18" flexible supply hoses with G1/2" female swivel connections



S-0133-BY

- 8" wall-mount mixing faucet
- EasyInstall riser for quick installation
- 44" flexible hose with heat resistant handle
- 1.15 GPM spray valve (S-0107-Y)
- Quarter-turn Eterna cartridges with spring checks
- Lever handles with color coded indexes
- 6" adjustable wall bracket
- 1/2" NPT female eccentric inlets with 2" flanges
- Adjustable centers from 7 3/4" to 8 1/4"



S-0133-A12-B

- 8" wall-mount mixing faucet
- EasyInstall add-on faucet
- 12" swing nozzle with stream regulator outlet, Series 1
- 44" flexible hose with heat resistant handle
- 1.15 GPM spray valve (S-0107)
- Quarter-turn Eterna cartridges with spring checks
- Lever handles with color coded indexes
- 6" adjustable wall bracket
- 1/2" NPT female eccentric inlets with 2" flanges
- Adjustable centers from 7 3/4" to 8 1/4"



S-0133-A12-BY

- 8" wall-mount mixing faucet
- EasyInstall add-on faucet
- 12" swing nozzle with stream regulator outlet, Series 1
- 44" flexible hose with heat resistant handle
- 1.15 GPM spray valve (S-0107-Y)
- Quarter-turn Eterna cartridges with spring checks
- Lever handles with color coded indexes
- 6" adjustable wall bracket
- 1/2" NPT female eccentric inlets with 2" flanges
- Adjustable centers from 7 3/4" to 8 1/4"



S-0133-BJ

- 8" wall-mount mixing faucet
- EasyInstall riser for quick installation
- 44" flexible hose with heat resistant handle
- 1.07 GPM spray valve (S-0107-J)
- Quarter-turn Eterna cartridges with spring checks
- Lever handles with color coded indexes
- 6" adjustable wall bracket
- 1/2" NPT female eccentric inlets with 2" flanges
- Adjustable centers from 7 3/4" to 8 1/4"



S-0133-B

- 8" wall-mount mixing faucet
- 44" flexible hose with heat resistant handle
- 1.15 GPM spray valve (S-0107)
- Quarter-turn Eterna cartridges with spring checks
- Lever handles with color coded indexes
- 6" adjustable wall bracket
- 1/2" NPT female eccentric inlets with 2" flanges
- Adjustable centers from 7 3/4" to 8 1/4"



S-0133-A12-BJ

- 8" wall-mount mixing faucet
- EasyInstall riser for quick installation
- EasyInstall add-on faucet
- 12" swing nozzle with stream regulator outlet, Series 1
- 44" flexible hose with heat resistant handle
- 1.07 GPM spray valve (S-0107-J)
- Quarter-turn Eterna cartridges with spring checks
- Lever handles with color coded indexes
- 6" adjustable wall bracket
- 1/2" NPT female eccentric inlets with 2" flanges
- Adjustable centers from 7 3/4" to 8 1/4"



STAINLESS STEEL LOW PROFILE PRE-RINSE UNITS

SMPF-2DLN-06

- Single hole deck-mount mixing faucet
- EasyInstall add-on faucet
- 6" swing nozzle with stream regulator outlet, Series 1
- 24" flexible hose with heat resistant handle
- 1.15 GPM spray valve (S-0107-Y)
- Quarter-turn Eterna cartridges with spring checks
- Lever handles with color coded indexes
- 6" adjustable wall bracket
- 18" flexible supply hoses with G1/2" female swivel connections



SMPK-2DLN-06

- Single hole deck-mount mixing faucet
- EasyInstall add-on faucet
- 6" swing nozzle with stream regulator outlet, Series 1
- 24" flexible hose with heat resistant handle
- 1.15 GPM spray valve (S-0107)
- Quarter-turn Eterna cartridges with spring checks
- Lever handles with color coded indexes
- 6" adjustable wall bracket
- 18" flexible supply hoses with G1/2" female swivel connections



SMPF-2DLN-08

- Single hole deck-mount mixing faucet
- EasyInstall add-on faucet
- 8" swing nozzle with stream regulator outlet, Series 1
- 24" flexible hose with heat resistant handle
- 1.15 GPM spray valve (S-0107-Y)
- Quarter-turn Eterna cartridges with spring checks
- Lever handles with color coded indexes
- 6" adjustable wall bracket
- 18" flexible supply hoses with G1/2" female swivel connections



SMPK-2DLN-08

- Single hole deck-mount mixing faucet
- EasyInstall add-on faucet
- 8" swing nozzle with stream regulator outlet, Series 1
- 24" flexible hose with heat resistant handle
- 1.15 GPM spray valve (S-0107)
- Quarter-turn Eterna cartridges with spring checks
- Lever handles with color coded indexes
- 6" adjustable wall bracket
- 18" flexible supply hoses with G1/2" female swivel connections



SMPF-8WLN-06

- Wall-mount mixing faucet
- EasyInstall add-on faucet
- 6" swing nozzle with stream regulator outlet, Series 1
- 24" flexible hose with heat resistant handle
- 1.15 GPM spray valve (S-0107-Y)
- Quarter-turn Eterna cartridges with spring checks
- Lever handles with color coded indexes
- 6" adjustable wall bracket
- 1/2" NPT female eccentric inlets with 2" flanges
- Adjustable centers from 7 3/4" to 8 1/4"



SMPK-8WLN-06

- 8" wall-mount mixing faucet
- EasyInstall add-on faucet
- 6" swing nozzle with stream regulator outlet, Series 1
- 24" flexible hose with heat resistant handle
- 1.15 GPM spray valve (S-0107)
- Quarter-turn Eterna cartridges with spring checks
- Lever handles with color coded indexes
- 6" adjustable wall bracket
- 1/2" NPT female eccentric inlets with 2" flanges
- Adjustable centers from 7 3/4" to 8 1/4"



STAINLESS STEEL PRE-RINSE UNIT ACCESSORIES

S-0107-Y

- 1.15 GPM spray valve
- Blue rubber bumper and handle
- Hold-down ring
- 3/4-14 UN male inlet fitting



S059X

- 6" swing nozzle with stream regulator outlet
- Fits all T&S swivel outlet faucets



S-0107

- 1.15 GPM spray valve
- Blue rubber bumper and handle
- Hold-down ring
- 3/4-14 UN male inlet fitting



S060X

- 8" swing nozzle with stream regulator outlet
- Fits all T&S swivel outlet faucets



S-0107-J

- 1.07 GPM spray valve
- Blue rubber bumper and handle
- Hold-down ring
- 3/4-14 UN male inlet fitting



S062X

- 12" swing nozzle with stream regulator outlet
- Fits all T&S swivel outlet faucets



S-0155-LNEZ

- Add-on faucet less nozzle
- EasyInstall quick installation inlet
- Quarter-turn Eterna cartridge with spring check
- Swivel outlet accepts T&S swing nozzles
- 3/8" NPT female outlet



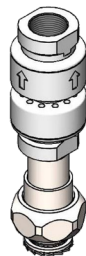
S133X

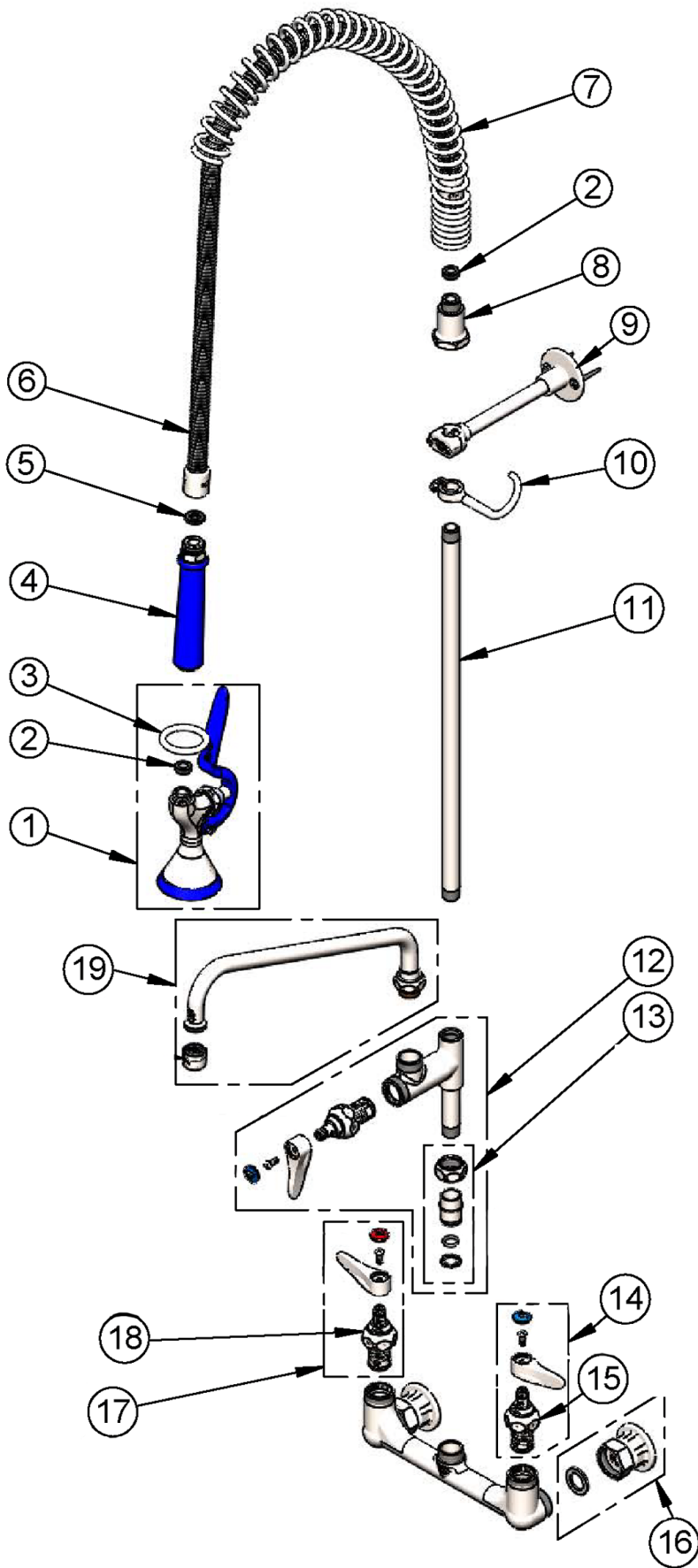
- 5 3/4" swivel gooseneck
- S-PT stream regulator outlet
- Fits all T&S swivel outlet faucets



S-0970-FEZ

- 3/8" continuous pressure dual check vacuum breaker
- EasyInstall quick installation inlet for T&S swivel outlet faucets
- 3/8" NPT female inlet and outlet
- Lock washer for rigid conversion included





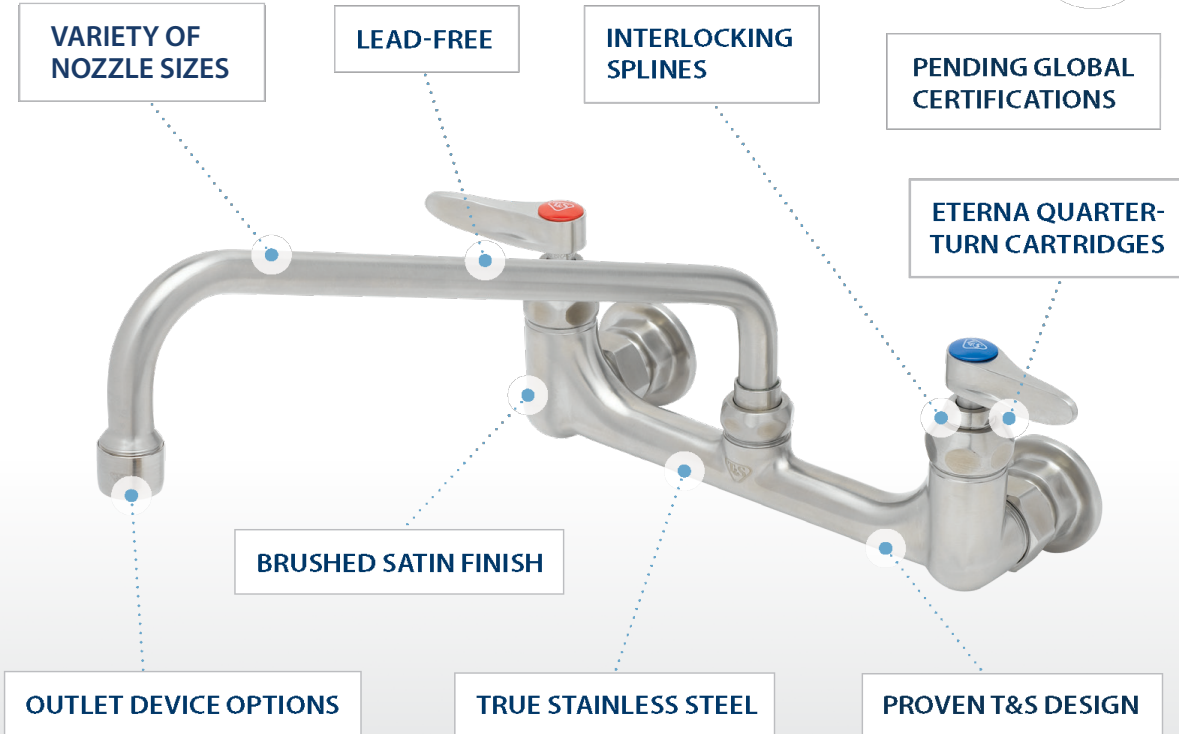
ITEM NO.	SALES NO.	DESCRIPTION
1	S-0107-Y	1.15 GPM Spray Valve (Blue)
2	010476-45	#27 Washer
3	S000907-30	Stainless Steel Spray Valve Hold-Down Ring
4	S020795-30	Stainless Steel Grip Handle (Blue)
5	001014-45	Washer, Hose Barrel
6	S-0044-H2A	44" Flexible Stainless Steel Hose, Less Handle
7	S000888-30	Stainless Steel EasyInstall Overhead Spring
8	S000821-30	Stainless Steel Spring Body
9	S-0109-01	Stainless Steel 6" Wall Bracket
10	S004R	Stainless Steel Finger Hook
11	S000369-30	Stainless Steel 3/8" NPT x 18" Riser
12	S-0155-LNEZ	Stainless Steel EasyInstall Add-On Faucet with Quarter-Turn Eterna Cartridge & Lever Handle, Less Nozzle
13	SEZ-K	Stainless Steel EasyInstall Kit: Nut, Bushing, O-Ring and Lock Washer
14	S002711-30NS	Stainless Steel Quarter-Turn Eterna Cartridge with Spring Check, Handle, Blue Index and Screw, LTC
15	S012442-30NS	Stainless Steel Quarter-Turn Eterna Cartridge, LTC with Spring Check
16	S00AA	Stainless Steel 1/2" NPT Female Eccentric Flange
17	S002712-30NS	Stainless Steel Quarter-Turn Eterna Cartridge with Spring Check, Handle, Red Index and Screw, RTC
18	S012443-30NS	Stainless Steel Quarter-Turn Eterna Cartridge with Spring Check, RTC
19	S062X	Stainless Steel 12" Swing Nozzle with Stream Regulator Outlet

EVERSTEEL™

Designed to last



FAUCETS



COMMERCIAL-DUTY
CONSTRUCTION



LIFETIME
COMPREHENSIVE
WARRANTY



EASY TO CLEAN



GLOBAL
SHIPPING



A NEW CLASSIC

S-1110

- 4" deck-mount mixing faucet
- 6" swing nozzle
- Lever handles with color coded indexes
- Quarter-turn Eterna cartridges with spring checks
- 1/2" NPT male inlets
- Tailpieces and nuts for 1/4" NPT stainless male connections



S-1115

- 4" wall-mount mixing faucet
- 6" swing nozzle
- Lever handles with color coded indexes
- Quarter-turn Eterna cartridges with spring checks
- 1/2" NPT male inlets
- Tailpieces and nuts for 1/4" NPT stainless male connections



S-1110-LN

- 4" deck-mount mixing faucet
- Lever handles with color coded indexes
- Quarter-turn Eterna cartridges with spring checks
- 1/2" NPT male inlets
- Tailpieces and nuts for 1/4" NPT stainless male connections
- Swivel outlet accepts T&S EverSteel swing nozzles



S-1115-LN

- 4" deck-mount mixing faucet
- Lever handles with color coded indexes
- Quarter-turn Eterna cartridges with spring checks
- 1/2" NPT male inlets
- Tailpieces and nuts for 1/4" NPT stainless male connections
- Swivel outlet accepts T&S EverSteel swing nozzles



STAINLESS STEEL WORKBOARD FAUCETS

S-1120-LN

- 8" deck-mount mixing faucet
- Lever handles with color coded indexes
- Quarter-turn Eterna cartridges with spring checks
- 1/2" NPT male inlets
- Tailpieces and nuts for 1/4" NPT stainless male connections



S-1142-04

- 8" deck-mount mixing faucet
- 4" wrist action handles with color coded indexes
- 5 3/4" swivel gooseneck
- Quarter-turn Eterna cartridges with spring checks
- 1/2" NPT male inlets
- Tailpieces and nuts for 1/4" NPT stainless male connections



S-1125-LN

- 8" wall-mount mixing faucet
- Lever handles with color coded indexes
- Quarter-turn Eterna cartridges with spring checks
- 1/2" NPT male inlets
- Tailpieces and nuts for 1/4" NPT stainless male connections



S-1146

- 4" wall-mount mixing faucets
- Lever handles with color coded indexes
- 5 3/4" swivel gooseneck
- Quarter-turn Eterna cartridges with spring checks
- 1/2" NPT male inlets
- Tailpieces and nuts for 1/4" NPT stainless male connections



S-1141

- 4" deck-mount mixing faucet
- Lever handles with color coded indexes
- 5 3/4" swivel gooseneck
- Quarter-turn Eterna cartridges with spring checks
- 1/2" NPT male inlets
- Tailpieces and nuts for 1/4" NPT stainless male connections



S-1146-04

- 4" wall-mount mixing faucet
- 4" wrist action handles with color coded indexes
- 5 3/4" swivel gooseneck
- Quarter-turn Eterna cartridges with spring checks
- 1/2" NPT male inlets
- Tailpieces and nuts for 1/4" NPT stainless male connections



S-1141-04

- 4" deck-mount mixing faucet
- 4" wrist action handles with color coded indexes
- 5 3/4" swivel gooseneck
- Quarter-turn Eterna cartridges with spring checks
- 1/2" NPT male inlets
- Tailpieces and nuts for 1/4" NPT stainless male connections



S-1147

- 8" wall-mount mixing faucet
- 5 3/4" swivel gooseneck
- Quarter-turn Eterna cartridges with spring checks
- 1/2" NPT male inlets
- Tailpieces and nuts for 1/4" NPT stainless male connections



S-1142

- 8" deck-mount mixing faucet
- Lever handles with color coded indexes
- 5 3/4" swivel gooseneck
- Quarter-turn Eterna cartridges with spring checks
- 1/2" NPT male inlets
- Tailpieces and nuts for 1/4" NPT stainless male connections



S-0231

- 8" wall-mount mixing faucet
- Lever handles with color coded indexes
- 12" swing nozzle with stream regulator outlet
- Quarter-turn Eterna cartridges with spring checks
- 1/2" NPT female eccentric inlets with 2" flanges
- Lock washer provided for rigid application
- Adjustable centers from 7 3/4" to 8 1/4"



S-0300

- Single hole deck-mount mixing faucet
- Lever handles with color coded indexes
- 5 3/4" swivel/rigid gooseneck
- 18" flexible supply hoses with G1/2" female swivel connections
- Stream regulator outlet
- Quarter-turn Eterna cartridges with spring checks



S-0230-LN

- 8" wall-mount mixing faucet
- Lever handles with color coded indexes
- Quarter-turn Eterna cartridges with spring checks
- 1/2" NPT female eccentric inlets with 2" flanges
- Swivel outlet accepts EverSteel swing nozzles
- Lock washer provided for rigid application
- Adjustable centers from 7 3/4" to 8 1/4"



S-0200-LN

- Single hole deck-mount mixing faucet
- Lever handles with color coded indexes
- 18" flexible supply hoses with G1/2" female swivel connections
- Quarter-turn Eterna cartridges with spring checks
- Lock washer provided for rigid application



S059X

- 6" swing nozzle with stream regulator outlet
- Fits all T&S EverSteel swivel outlet faucets



S062X

- 12" swing nozzle with stream regulator outlet
- Fits all T&S EverSteel swivel outlet faucets



S060X

- 8" swing nozzle with stream regulator outlet
- Fits all T&S EverSteel swivel outlet faucets



S133X

- 5 3/4" swivel gooseneck
- S-PT stream regulator outlet
- Fits all T&S EverSteel swivel outlet faucets









A HISTORY OF EXCELLENCE

T&S Brass and Bronze Works has built a reputation for quality, service and innovation for 75 years –beginning with our original pre-rinse unit, the market’s very first. Today, our products have become the standard for many U.S. hospitals, schools, restaurants, supermarkets and public facilities.

T&S products are highly acclaimed throughout the industry for being well-built, long-lasting and reliable. Rigorous testing and a focus on interchangeability have helped set T&S apart from the competition.

T&S BRASS AND BRONZE WORKS, INC.

2 Saddleback Cove • P.O. Box 1088 • Travelers Rest, SC 29690

U.S. Toll-free 800-476-4103 • +1 864-834-4102 • *Fax* 800-868-0084

E-mail customerservice@tsbrass.com

Canada Toll-free +1 888-288-0432

