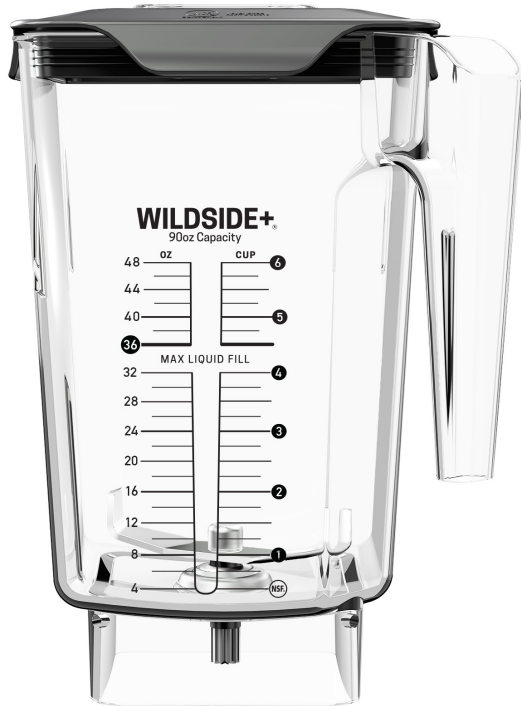


# WILDSIDE+ JAR™

40-545



**WILDSIDE+ JAR™**



**A FIVE-SIDED REVOLUTION**

An exclusive, patented square design with a fifth side and large capacity produces thicker, faster blending and shorter customer wait times. It's extra-wide base, along with a more aggressive blade nearly 4 inches long, has helped the WildSide+ jar to raise the bar in the commercial blending category.

**CUSTOMIZE**

Custom jar graphics, label your jars, add your logo.

**SAFE AND STRONG**

Made from durable Tritan™. These jars were built to last.

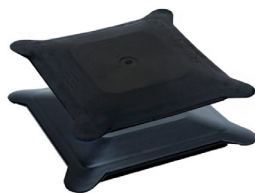
**VERSATILITY**

Blend smoothies, soups, frozen drinks, etc. Keeps your menu offering fresh.



**LATCHING LID**

Preferred for non-sound enclosure models



**FLAT (HARD & SOFT)**

For sound enclosure models only



**NSF APPROVED WILDSIDE+ JAR**

**14 SECONDS**  
TO AN AMAZING BLENDED DRINK



**BLUNT BLADE TECHNOLOGY**

**STRONGER**  
THAN TRADITIONAL BLADES



**EXTREMELY DURABLE**

**EASTMAN TRITAN™**  
MAKES THESE JARS LAST

\*For international warranty and certification details please see your in-country distributor.  
WWW.BLENDTEC.COM/COMMERCIAL | 1-800-BLENDTEC  
SPS-045 A06, Spec Sheet, Wildside+ Jar, US ENG, JAN 2022

