

- **B3632** 36-3/4"L x 32-1/4"D x 82-1/2"H
- **B4732** 47-3/4"L x 32-1/4"D x 82-1/2"H
- **B5932** 59-3/4"L x 32-1/4"D x 82-1/2"H
- **B7132** 71-3/4"L x 32-1/4"D x 82-1/2"H
- **B8832** 88-3/8"L x 32-1/4"D x 82-1/2"H

Included

- Breeze~E (Type-II) self-contained refrigeration
- Blue Fin coated coil
- Condensate pan (self-contained refig. only)
- Flat upper front panel & header
- Integrated average product temperature of 40°F or less
- LED top light(s)
- One piece formed ABS plastic tub (n/a B8832)
- One year parts & labor; 5 year compressor warranty
- Removable deck pans provide complete access to evaporator coil & refrigeration connections
- Shelving removable and adjustable on 1" centers



B4732

Specify	Standard Features	Additional Options
EXTERIOR COLOR	• Laminate (stock colors)	• Laminate (non-stock colors) • Stainless steel
INTERIOR COLOR	• Powder coated Silversan Black	• Stainless steel
LOWER FRONT PANEL COLOR	• Powder coated Silversan Black	• Stainless steel (must choose stainless exterior)
REAR EXTERIOR COLOR	• Black	• White
BASE SUPPORT	• Casters w/ levelers (self-cont.)	• Levelers (only) • Seismic levelers
END PANELS	• Full w/stainless steel mirror interior	• Cutaway w/glass • None (synchronized defrost required)
REAR DOORS	• None (solid back panel)	• Rear loading hinged doors, locking (changes air discharge to lower rear)
SHELVING	• Metal shelves, non-lighted	• Metal shelves, lighted (LED)
LIGHTS	• LED 4000K w/ frosted lens	• LED 3500K w/ frosted lens
ELECTRICAL CONNECTION	• 6' Straight blade power cord (base exit)	• 6' Locking blade power cord (base exit) • 6' Locking blade power cord (top exit) • 6' Straight blade power cord (top exit) • Electrical leads (remote)
REFRIGERATION	• Breeze~E (Type-II) self-contained refrigeration	• Note: Remote doesn't incl Conds unit. Floor drain reqd. ¹ • Remote w/thermostat, solenoid & TXV
MISCELLANEOUS		² • Roll-down security cover, locking (Requires two end panels (full or cutaway) per case) • Second year parts & labor warranty (excludes compressor) • Shelf w/ extended product stop & air deflectors for salad bins
ACCESSORIES		• Clean Sweep® coil cleaner (self-cont.) ³ • Night curtain, retractable, non-locking • Price tag molding (matches interior color) • Removable solid security cover, locking

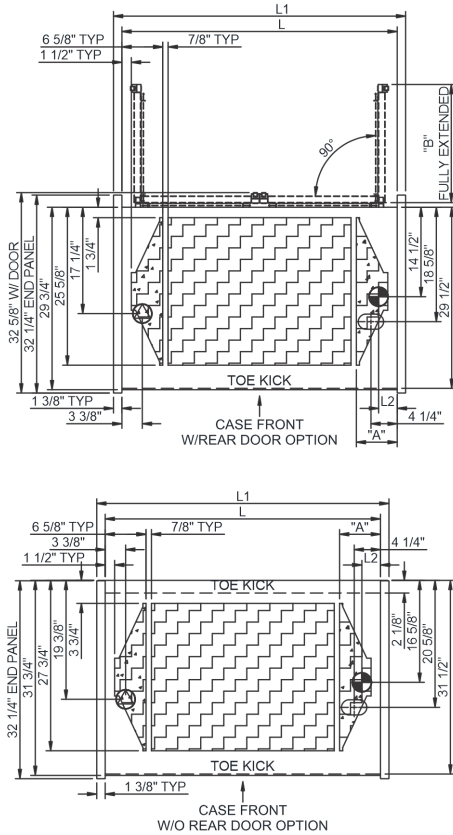
Option Notes: ¹ - See tech spec for load reqmts

² - n/a w/Night curtain

³ - n/a w/Roll-down security cover

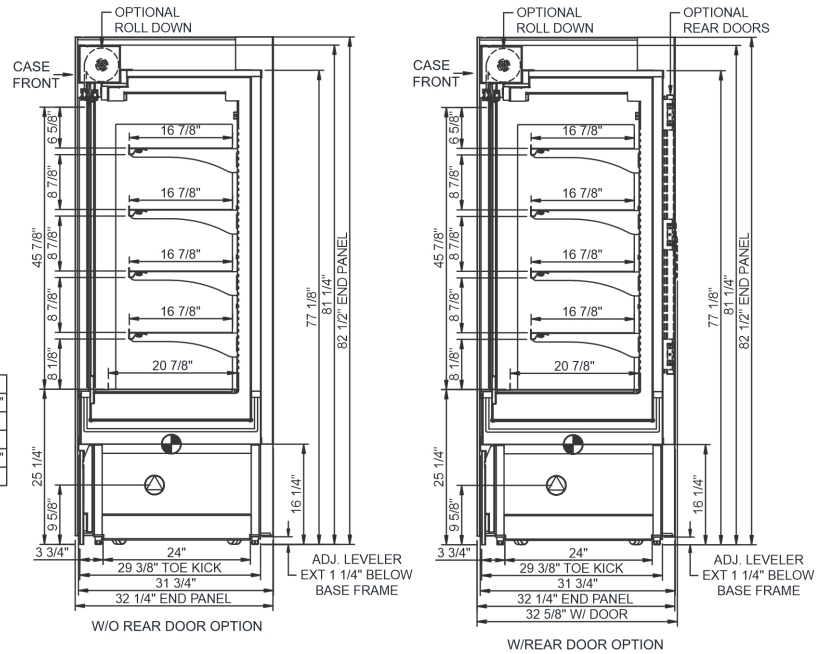
Intended Environment: Type II - Designed to operate in ambient conditions of 80°F and 55% relative humidity unless noted otherwise in system information below.		
Zone	Intended Product To Be Displayed	Warmest Avg Prod Temp ° F
1	Packaged refrigerated products	40

PLAN VIEW



	"A"	"B"
B3632	6 5/8"	28 3/8"
B4732	6 5/8"	18"
B5932	6 5/8"	18"
B7132	14 1/8"	28 3/8"
B8832	17 3/4"	17"

SIDE VIEW



NOTE: ALL DIMENSIONS APPROXIMATE

- ELECTRICAL JUNCTION BOX (SUPPLIED WITH 6" LEADS OR POWER CORD).
- REMOTE FLOOR SINK & UTILITIES ACCESS AREA.
- LOCATION OF DRAIN TUBE FOR REMOTE REF. ONLY (SUPPLIED WITH 3/4" OR 1 1/2" PVC TUBE).
- SELF-CONTAINED CASE SERVICE ACCESS AREA.
- REFRIGERATION LINE CONNECTION.
- DRY CASE SERVICE ACCESS AREA.

Model Technical Specifications																
Model	L"	L1"	L2"	System Circuit Volts		Phs	Freq	Amps ***	Watts	Wires	NEMA Plug	SST	Conv. Rack BTUH	Para. Rack BTUH	Est Wt	
				Circuit #1	110-120											
B3632	34.00	36.75	3.13	Remote (DX)	Circuit #1	110-120	1	60	1.13	99	2+G	Leads Multiple	20.00	4320	4000	850
				Remote (GLYCOL 35%)	Circuit #1	110-120	1	60	1.13	99	2+G	Leads Multiple	20.00	4320	4000	
				Self-Contained (R449A)	Circuit #1	110-120	1	60	16.00	1,371	2+G	5-20P or L5-20P	N/A	N/A	N/A	
B4732	45.00	47.75	3.13	Remote (DX)	Circuit #1	110-120	1	60	1.47	139	2+G	Leads Multiple	20.00	5918	5480	900
				Self-Contained (R449A)	Circuit #1	208-240	1	60	9.55	1,750	2+G	6-20P or L6-20P	N/A	N/A	N/A	
B5932	57.00	59.75	3.13	Remote (DX)	Circuit #1	110-120	1	60	1.52	98	2+G	Leads Multiple	20.00	7042	6520	1,100
				Remote (GLYCOL 35%)	Circuit #1	110-120	1	60	1.52	98	2+G	Leads Single	20.00	7042	6520	
				Self-Contained (R449A)	Circuit #1	208-240	1	60	12.00	2,309	2+G	6-20P or L6-20P	N/A	N/A	N/A	
B7132	69.00	71.75	3.13	Remote (DX)	Circuit #1	110-120	1	60	2.36	238	2+G	Leads Multiple	20.00	8618	7980	1,300
				Self-Contained (R449A)	Circuit #1	208-240	1	60	15.32	2,902	2+G	6-20P or L6-20P	N/A	N/A	N/A	
B8832	85.63	88.38	3.13	Remote (R404A)	Circuit #1	110-120	1	60	3.13	306	2+G	Leads Multiple	20.00	13046	12080	1,550
				Self-Contained (R449A)	Circuit #1	208-240	1	60	20.41	2,901	2+G	6-30P or L6-30P	N/A	N/A	N/A	

*** Does not include electric defrost on freezer models.

Regulatory Approvals:

All Models	Accordance with AHRI Std 1200 ETL Listed to UL 471 ETL Listed to CAN/CSA 22.2 No. 120 ETL Sanitation to NSF/ANSI 7
------------	---



In Accordance with
AHRI Std 1200

DOE 2017
Energy Efficiency
Compliant

Important Notes:

- 1) ELECTRICAL NOTE: If GFCI is required, a GFCI breaker MUST be used in lieu of a GFCI receptacle
- 2) Performance issues (product temperatures, water on floor, etc.) caused by adverse conditions are not covered by warranty.
- 3) Keep unit at least 15' from exterior doors, overhead HVAC vents, or any air curtain disruption.
- 4) End panels must be tightly joined or kept at least 6" away from any structure to prevent condensation.
- 5) Do not expose unit to direct sunlight or any heat source (ovens, fryers, etc.).
- 6) Tile floors, low ceilings, or small rooms will increase noise level.
- 7) Rear Door option changes air discharge to lower rear.
- 8) Compressor air lower front intake and upper front discharge. Front panel cannot be blocked.

⚠ WARNING: This product can expose you to chemicals, including Urethane (Ethyl Carbamate), which are known to the State of California to cause cancer and birth defects or other reproductive harm. For more information go to www.P65Warnings.ca.gov.