

- **CO3324R** 36-1/4"L x 24-1/8"D x 33-3/4"H
- **CO4324R** 47-1/4"L x 24-1/8"D x 33-3/4"H
- **CO5324R** 59-1/4"L x 24-1/8"D x 33-3/4"H
- **CO6324R** 71-1/4"L x 24-1/8"D x 33-3/4"H

Included

- NOTE: ADD SUFFIX TO MODEL # LISTED ABOVE BASED ON MODEL CONFIGURATION CHOSEN BELOW
- Breeze~E (Type-II) self-contained refrigeration (rear access)
- Blue Fin coated coil
- Casters (non-locking) w/ levelers
- Condensate pan (self-contained refig. only)
- Integrated average product temperature of 40°F or less
- LED 3500K top light(s)
- One piece formed ABS plastic tub
- One year parts & labor; 5 year compressor warranty



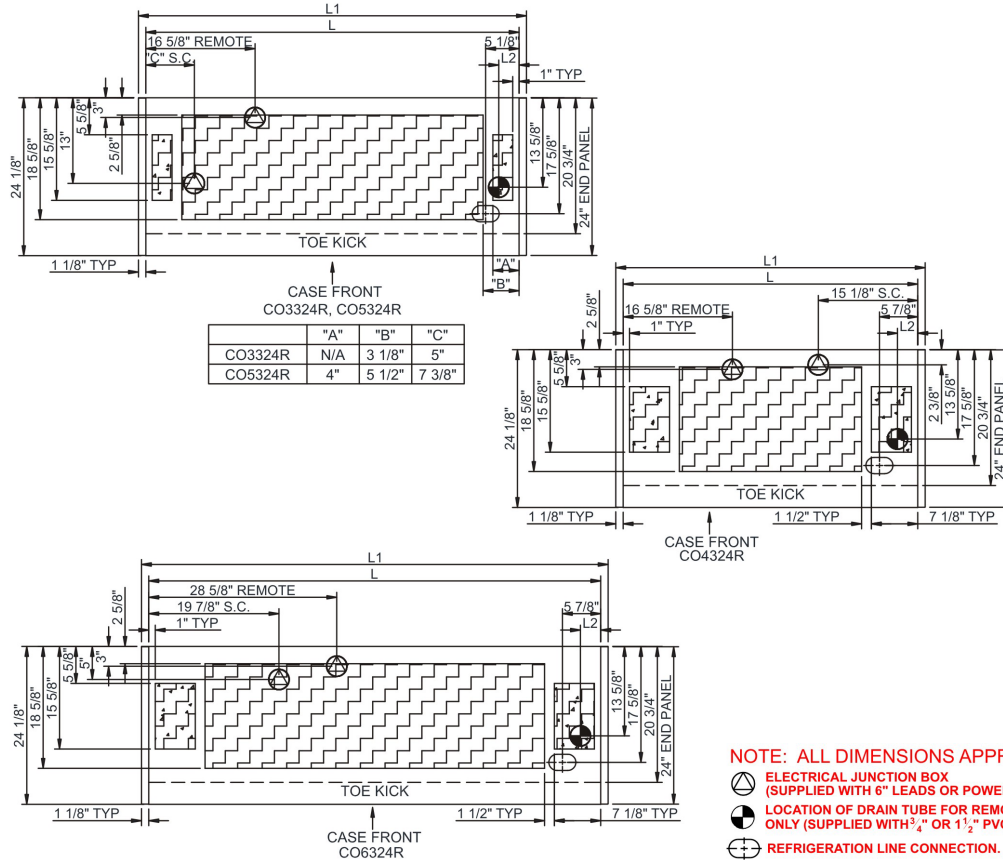
CO3324R

| Specify | Standard Features | Additional Options |
|------------------------------|---|---|
| MODEL CONFIGURATION | <ul style="list-style-type: none"> • Freestanding (-FS) Counter ht. 33-3/4"H; freestanding unit w/2 end panels. Top & front panels positioned between end panels | <ul style="list-style-type: none"> • Counter height (-CH) Counter ht. 33-3/4"H; Top & front panels extended over end panels to blend w/adj. counters (supplied by others) • Undercounter height (-UC) Undercounter ht. 32-3/4"H; front panel extends over end panels to blend w/adj. counters (supplied by others). Counter surface (supplied by others) extends over top of unit |
| EXTERIOR COLOR | <ul style="list-style-type: none"> • Laminate (stock colors) | <ul style="list-style-type: none"> • Laminate (non-stock colors) • Stainless steel |
| INTERIOR COLOR | <ul style="list-style-type: none"> • Powder coated Silversan Black | <ul style="list-style-type: none"> • Stainless steel |
| REAR EXTERIOR COLOR | <ul style="list-style-type: none"> • Black | <ul style="list-style-type: none"> • Stainless steel |
| END PANELS | <ul style="list-style-type: none"> • Full w/stainless steel mirror interior | <ul style="list-style-type: none"> • Curved w/stainless steel mirror interior (-FS model only) • None (synchronized defrost required) |
| ELECTRICAL CONNECTION | <ul style="list-style-type: none"> • 6' Straight blade power cord (self-cont.) | <ul style="list-style-type: none"> • 6' Locking power cord (self-cont.) • Electrical leads (remote) |
| REFRIGERATION | <ul style="list-style-type: none"> • Breeze~E (Type-II) self-contained refrigeration (rear access) | <ul style="list-style-type: none"> • Breeze~E (Type-II) self-contained refrigeration (front access)(w/ 2"D open rear wall spacer) • Note: Remote doesn't incl Conds unit. Floor drain reqd. 1 • Remote w/thermostat, solenoid & TXV (front access) 2 • Remote w/thermostat, solenoid & TXV (rear access) |
| MISCELLANEOUS | | <ul style="list-style-type: none"> • Second year parts & labor warranty (excludes compressor) |
| ACCESSORIES | | <ul style="list-style-type: none"> • 2"D Full chimney rear wall spacer (front access only) • 2"H, 6.5"D Display riser(s) for lower display • Night curtain, retractable, non-locking • Removable solid security cover, locking |

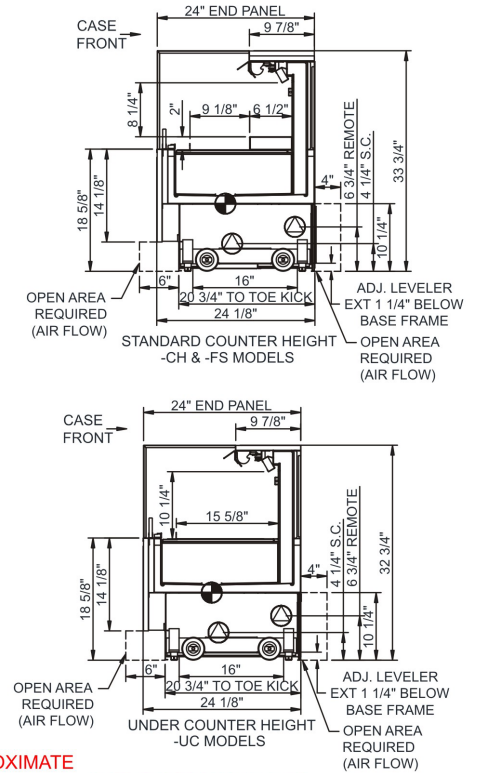
Option Notes: 1 - See tech spec for remote load reqmts
 2 - See tech spec for remote load reqmts

| | | |
|--|---|----------------------------------|
| Intended Environment: Type II - Designed to operate in ambient conditions of 80°F and 55% relative humidity unless noted otherwise in system information below. | | |
| Zone | Intended Product To Be Displayed | Warmest Avg Prod Temp ° F |
| 1 | Packaged refrigerated products | 40 |

PLAN VIEW



SIDE VIEW



NOTE: ALL DIMENSIONS APPROXIMATE

- ⊕ ELECTRICAL JUNCTION BOX (SUPPLIED WITH 6\"/>
- ⊖ LOCATION OF DRAIN TUBE FOR REMOTE REF. ONLY (SUPPLIED WITH 3/4\"/>
- ⊕ REFRIGERATION LINE CONNECTION.
- ⊗ REMOTE FLOOR SINK & UTILITIES ACCESS AREA.
- ⊗ SELF-CONTAINED CASE SERVICE ACCESS AREA.
- ⊗ DRY CASE SERVICE ACCESS AREA.

| Model Technical Specifications | | | | | | | | | | | | | | | | |
|--------------------------------|-------|-------|------|------------------------|------------------------|---------|------|----------|-------|-------|-----------|-----------------|------------------|------------------|--------|-------|
| Model | L" | L1" | L2" | System Circuit Volts | | Phs | Freq | Amps *** | Watts | Wires | NEMA Plug | SST | Conv. Rack BTU/H | Para. Rack BTU/H | Est Wt | |
| | | | | Remote (R404A) | Self-Contained (R513A) | | | | | | | | | | | |
| CO3324R | 34.00 | 36.25 | 2.38 | Remote (R404A) | Circuit #1 | 110-120 | 1 | 60 | 1.20 | 46 | 2+G | Leads Multiple | 20.00 | 1469 | 1360 | 500 |
| | | | | Self-Contained (R513A) | Circuit #1 | 110-120 | 1 | 60 | 12.00 | 1,050 | 2+G | 5-15P or L5-15P | N/A | N/A | N/A | |
| CO4324R | 45.00 | 47.25 | 3.13 | Remote (DX) | Circuit #1 | 110-120 | 1 | 60 | 1.32 | 66 | 2+G | Leads Multiple | 20.00 | 1944 | 1800 | 600 |
| | | | | Self-Contained (R513A) | Circuit #1 | 110-120 | 1 | 60 | 12.00 | 1,053 | 2+G | 5-15P or L5-15P | N/A | N/A | N/A | |
| CO5324R | 57.00 | 59.25 | 3.13 | Remote (DX) | Circuit #1 | 110-120 | 1 | 60 | 1.60 | 76 | 2+G | Leads Multiple | 20.00 | 2592 | 2400 | 700 |
| | | | | Self-Contained (R513A) | Circuit #1 | 110-120 | 1 | 60 | 16.00 | 1,204 | 2+G | 5-20P or L5-20P | N/A | N/A | N/A | |
| CO6324R | 69.00 | 71.25 | 3.13 | Remote (DX) | Circuit #1 | 110-120 | 1 | 60 | 1.64 | 85 | 2+G | Leads Multiple | 20.00 | 2938 | 2720 | 1,000 |
| | | | | Self-Contained (R513A) | Circuit #1 | 110-120 | 1 | 60 | 16.00 | 1,211 | 2+G | 5-20P or L5-20P | N/A | N/A | N/A | |

*** Does not include electric defrost on freezer models.

| Regulatory Approvals: | |
|-----------------------|---|
| All Models | Accordance with AHRI Std 1200 ETL Listed to UL 471 ETL Listed to CAN/CSA 22.2 No. 120 ETL Sanitation to NSF/ANSI 7 |



In Accordance with
AHRI Std 1200

DOE 2017
Energy Efficiency
Compliant

Important Notes:

- ELECTRICAL NOTE: If GFCI is required, a GFCI breaker MUST be used in lieu of a GFCI receptacle
- 33" Minimum entry door clearance required (w/out shipping skid)
- Performance issues (product temperatures, water on floor, etc.) caused by adverse conditions are not covered by warranty.
- Keep unit at least 15' from exterior doors, overhead HVAC vents, or any air curtain disruption.
- Do not expose unit to direct sunlight or any heat source (ovens, fryers, etc.).
- Compressor air rear intake, front discharge at toe kick. Front and rear panels cannot be blocked. Must remain 4" from wall.

⚠ WARNING: This product can expose you to chemicals, including Urethane (Ethyl Carbamate), which are known to the State of California to cause cancer and birth defects or other reproductive harm. For more information go to www.P65Warnings.ca.gov.