

## GR SERIES | ACCESSORIES

### FIELD-INSTALLED ACCESSORIES

#### SINGLE BASKETS



**VBASKET-SINGLE**  
40-lb & 50-lb GR Fryers  
(13"x13.25"x6")

**BASKET-1TK65**  
70-lb GR Fryers  
(17.5"x12.5"x6")

**VBASKET-SING85**  
90-lb GR Fryers  
(18.5"x15.5"x6")

#### TWIN BASKETS



**BASKETS-TWINRD**  
40-lb & 50-lb GR Fryers  
(6.25"x12.75"x6")

**BASKETS-TWIN65**  
70-lb GR Fryers (8.5"x13.25"x6")

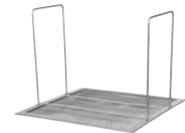
**VBASKET-TWIN85**  
90-lb GR Fryers  
(9.25"x17.5"x6")

#### TRI BASKETS



**BASKETS-TRI65**  
70-lb & 90-lb GR Fryers  
(6.25"x13.25"x6")

#### CRUMB SCREEN



**CRUMB-SCREEN**  
40-lb GR Fryers

**45CRUMB-SCREEN**  
50-lb GR Fryers

**65CRUMB-SCREEN**  
70-lb GR Fryers

**85CRUMB-SCREEN**  
90-lb GR Fryers

#### ADJUSTABLE LEGS

6" Adjustable legs  
(set of 4)



IMAGE NOT AVAILABLE

**VULLEGS-PLTMNT**  
single GR Fryers  
(not battered)

#### HOSE

4' Long gas flex hose  
and quick disconnect for  
freestanding fryers



**3/4QD-HOSE-4**  
3/4" x 4' - all GR Fryers

**11/4QDH-4FT**  
1-1/4" x 4' - all GR Fryers

#### SPLASH GUARD

10" High stainless steel  
removable splash guard

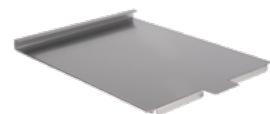


**VSPGARD-G/E**  
40-lb, 50-lb & 70-lb GR Fryers

**VSPGARD-ELE85**  
90-lb GR Fryers

#### TANK COVER

Stainless steel tank cover  
/ work surface top



**COVER-TANK**  
40-lb & 50-lb GR Fryers

**COVER-TANK65**  
70-lb GR Fryers

**COVER-TANK85**  
90-lb GR Fryers

#### CONNECTING KIT

Secures 2 or more  
fryers together or with  
a Frymate™ - Includes  
grease strip and  
connecting hardware



**CONNECT-KITVUL**  
40-lb/50-lb/70-lb GR Fryers

**CONNECT-KITVUL85**  
90-lb GR Fryers

#### MICRO-FILTRATION CONVERSION

**CONVERSION KIT:** Contains 3 fabric  
filter envelopes, stainless steel  
mesh insert and clip

**CONVKIT-3**  
40-lb/50-lb GR Fryers

**CONVKIT-2**  
70-lb/90-lb GR Fryers



**REFILL KIT:** Contains 6 fabric  
filter envelopes

**REFILLKIT-3**  
40-lb/50-lb GR Fryers

**REFILLKIT-2**  
70-lb/90-lb GR Fryers



## VEG & LG SERIES | ACCESSORIES

### FIELD-INSTALLED ACCESSORIES

#### SINGLE BASKETS



**VBASKET-SINGLE**  
VEG35 & LG300 Fryers

**BASKET-1TK65**  
LG500 Fryers

#### TWIN BASKETS



**BASKETS-TWINRD**  
VEG35 & LG300 Fryers

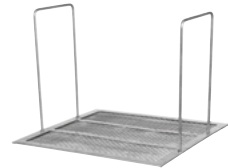
**BASKETS-TWIN65**  
LG500 Fryers

#### TRI BASKETS



**BASKETS-TRI65**  
LG500 Fryers

#### CRUMB SCREEN



**CRUMB-SCREEN**  
VEG35 & LG300 Fryers

**45CRUMB-SCREEN**  
LG400 Fryers

**65CRUMB-SCREEN**  
LG500 Fryers

#### HOSE

4' Long gas flex hose and quick disconnect freestanding fryers



**3/4QD-HOSE-4**  
¾" x 4' - all VEG/LG Fryers

**11/4QDH-4FT**  
1¼" x 4' - all VEG/LG Fryers

#### CASTERS

Adjustable Casters - 2 Swivel Non-Locking & 2 Swivel Locking



**CASTERS-PLTMNT**  
all VEG/LG Fryers

#### SPLASH GUARD

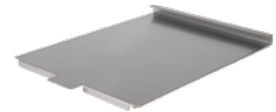
10" High stainless steel removable splash guard each



**VSPGARD-G/E**  
all VEG/LG Fryers

#### TANK COVER

Stainless steel tank cover / work surface top



**COVER-TANK**  
VEG35 & LG300 Fryers

**COVER-TANK65**  
LG500 Fryers

#### CONNECTING KIT

Secures 2 or more fryers together or with a Frymate™; includes grease strip and connecting hardware  
1 connecting kit per 2 fryers



**CONNECT-KITVULPF**  
VEG Fryers

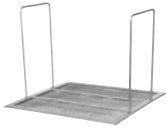
**CONNECT-KITVUL**  
LG Fryers



## ER SERIES | OPTIONS

### FIELD-INSTALLED ACCESSORIES

#### CRUMB SCREEN

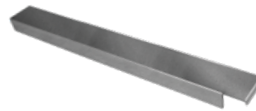


**45CRUMB-SCREEN**  
50-lb ER Fryers

**ER85CRUMB-SCREEN**  
85-lb ER Fryers

#### CONNECTING KIT

Secures 2 or more fryers together or with a Frymate™; includes grease strip and connecting hardware



**CONNECT-KITVUL**  
50-lb ER Fryers

**CONNECT-KITVUL85ELE**  
to second ER85 Fryer

**CONNECT-KITVUL85ELEVX**  
To Frymate VX21S

#### MICRO-FILTRATION CONVERSION

CONVERSION KIT: Contains 3 fabric filter envelopes, stainless steel mesh insert and clip

**CONVKIT-1**  
50lb ER Fryers

**CONVKIT-2**  
85-lb ER Fryers



REFILL KIT: Contains 6 fabric filter envelopes

**REFILLKIT-1**  
50lb ER Fryers

**REFILLKIT-2**  
85-lb ER Fryers



### FACTORY-INSTALLED OPTIONS

Option Code	Description	Available on
SBL	Single basket lifts available only with (D) and (C) controls (adds 6 3/4" D to unit)	50-lb & 85-lb ER Fryers
OR	Patented rear oil reclamation hook-up with lockable gate valve. Priced 1 per unit	50-lb & 85-lb ER freestanding and battery filtered units

## FRYMATE™ SERIES | CONNECTING KITS

### FIELD-INSTALLED CONNECTING KITS

---

Kits used for securing fryer to Frymate™. Includes grease strip and connecting hardware.

Accessory Code	Frymate™ Model	Connects to
CONNECT-KITVUL	Frymate™ VX15	<b>1VEG35M</b> All 50-lb <b>ER</b> Freestanding Fryers All 35-, 45- & 70-lb <b>LG</b> Freestanding Fryers All 35-, 45- & 70-lb <b>GR</b> Freestanding Fryers
CONNECT-KITVULPF	Frymate™ VX15	All 50- & 70-lb <b>PowerFry5™ (VK)</b> Freestanding Fryers All 50- & 70-lb <b>PowerFry3™ (TR)</b> Freestanding Fryers
CONNECT-KITVUL85	Frymate™ VX21S	All 90-lb <b>GR</b> Freestanding Fryers
CONNECT-KITVUL85PF	Frymate™ VX21S	All 90-lb <b>PowerFry5™ (VK)</b> Freestanding Fryers All 90-lb <b>PowerFry3™ (TR)</b> Freestanding Fryers
CONNECT-KITVUL85ELEVX	Frymate™ VX21S	All 85-lb <b>ER</b> Freestanding Fryers

*NOTE: Each VX15 is shipped with a CONNECTKIT-VUL in the packaging and each VX21S is shipped with a CONNECTKIT-VUL85.*