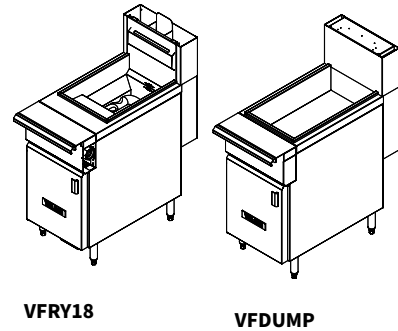


## V SERIES | MATCHED FRYERS AND ACCESSORIES





### POWERFRY™ SERIES

Model	Description	Total BTU/hr
VFRY18F	18" Single Fryer with Filter	70,000
VFRY18	18" Single Fryer	70,000
VFDUMP	18" Dump Station	N/A

NOTE: VFRY18F and VFRY18 have a total oil capacity of 50 lbs.



### FIELD-INSTALLED ACCESSORIES FOR MATCHED FRYERS

<p><b>ADJUSTABLE CASTERS</b></p>  <p><b>CASTERS-VULSCR</b> <i>Set of 4 for Fryer</i></p> <p><b>CASTERS-PLTMNT</b> <i>Set of 4 for Dump Station</i></p>	<p><b>FRYER TANK COVER</b></p> <p>Stainless steel tank cover/ work surface top</p>  <p><b>COVER-TANK</b></p>
<p><b>BULK FRYER BASKET</b></p> <p>Single, bulk fryer basket</p>  <p><b>VBASKET-SINGLE</b></p>	<p><b>CRUMB SCREEN</b></p> <p>Crumb screen mesh with handles</p>  <p><b>CRUMB-SCREEN</b></p>

## POWERFRY™ (TR & VK SERIES) | ACCESSORIES

### FIELD-INSTALLED ACCESSORIES

#### SINGLE BASKETS



**VBASKET-SINGLE**  
50-lb PowerFry Fryers (13"x13.25"x6")

**BASKET-1TK65**  
70-lb PowerFry Fryers (17.5"x12.5"x6")

**VBASKET-SING85**  
90-lb PowerFry Fryers (18.5"x15.5"x6")

#### TWIN BASKETS



**BASKETS-TWINRD**  
50-lb PowerFry Fryers (6.25"x12.75"x6")

**BASKETS-TWIN65**  
70-lb PowerFry Fryers (8.5"x13.25"x6")

**VBASKET-TWIN85**  
90-lb PowerFry Fryers (9.25"x17.5"x6")

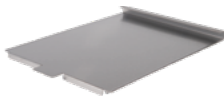
#### TRI BASKETS



**BASKETS-TRI65**  
70-lb & 90-lb PowerFry Fryers  
(6.125"x13.25"x6")

#### TANK COVER

Stainless steel tank cover  
/ work surface top



**COVER-TANK**  
50-lb PowerFry Fryers

**COVER-TANK65**  
70-lb PowerFry Fryers

**COVER-TANK85**  
90-lb PowerFry Fryers

#### CRUMB SCREEN

Crumb screen mesh with handles



**CRUMB-SCREEN**  
50-lb PowerFry Fryers

**65CRUMB-SCREEN**  
70-lb PowerFry Fryers

**85CRUMB-SCREEN**  
90-lb PowerFry Fryers

#### SPLASH GUARD

10" High stainless steel  
removable splash guard each



**VSPGARD-G/E**  
50-lb & 70-lb PowerFry Fryers

**VSPGARD-ELE85**  
90-lb PowerFry Fryers

#### HOSE

4' long gas flex hose and quick  
disconnect freestanding fryers



**3/4QD-HOSE-4**  
3/4" x 4' - all PowerFry Fryers

**11/4QDH-4FT**  
1-1/4" x 4' - all PowerFry Fryers

#### CONNECTING KIT

Secures 2 or more fryers together  
or with a Frymate™; includes grease  
strip and connecting hardware



**CONNECT-KITVULPF**  
50-lb & 70-lb PowerFry Fryers

**CONNECT-KITVUL85PF**  
90-lb PowerFry Fryers

#### MICRO FILTRATION CONVERSION

**CONVERSION KIT:** Contains 3  
fabric filter envelopes, stainless  
steel mesh insert and clip

**REFILL KIT:** Contains 6 fabric  
filter envelopes

**CONVKIT-1 & REFILLKIT-1**  
Freestanding 50-lb Fryers with filter  
pan located under 1 fryer

**CONVKIT-2 & REFILLKIT-2**  
All battery fryers

## GR SERIES | ACCESSORIES

### FIELD-INSTALLED ACCESSORIES

#### SINGLE BASKETS



**VBASKET-SINGLE**  
40-lb & 50-lb GR Fryers  
(13"x13.25"x6")

**BASKET-1TK65**  
70-lb GR Fryers  
(17.5"x12.5"x6")

**VBASKET-SING85**  
90-lb GR Fryers  
(18.5"x15.5"x6")

#### TWIN BASKETS



**BASKETS-TWINRD**  
40-lb & 50-lb GR Fryers  
(6.25"x12.75"x6")

**BASKETS-TWIN65**  
70-lb GR Fryers (8.5"x13.25"x6")

**VBASKET-TWIN85**  
90-lb GR Fryers  
(9.25"x17.5"x6")

#### TRI BASKETS



**BASKETS-TRI65**  
70-lb & 90-lb GR Fryers  
(6.25"x13.25"x6")

#### CRUMB SCREEN



**CRUMB-SCREEN**  
40-lb GR Fryers

**45CRUMB-SCREEN**  
50-lb GR Fryers

**65CRUMB-SCREEN**  
70-lb GR Fryers

**85CRUMB-SCREEN**  
90-lb GR Fryers

#### ADJUSTABLE LEGS

6" Adjustable legs  
(set of 4)



IMAGE NOT AVAILABLE

**VULLEGS-PLTMNT**  
single GR Fryers  
(not battered)

#### HOSE

4' Long gas flex hose  
and quick disconnect for  
freestanding fryers



**3/4QD-HOSE-4**  
3/4" x 4' - all GR Fryers

**11/4QDH-4FT**  
1-1/4" x 4' - all GR Fryers

#### SPLASH GUARD

10" High stainless steel  
removable splash guard

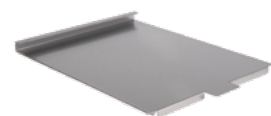


**VSPGARD-G/E**  
40-lb, 50-lb & 70-lb GR Fryers

**VSPGARD-ELE85**  
90-lb GR Fryers

#### TANK COVER

Stainless steel tank cover  
/ work surface top



**COVER-TANK**  
40-lb & 50-lb GR Fryers

**COVER-TANK65**  
70-lb GR Fryers

**COVER-TANK85**  
90-lb GR Fryers

#### CONNECTING KIT

Secures 2 or more  
fryers together or with  
a Frymate™ - Includes  
grease strip and  
connecting hardware



**CONNECT-KITVUL**  
40-lb/50-lb/70-lb GR Fryers

**CONNECT-KITVUL85**  
90-lb GR Fryers

#### MICRO-FILTRATION CONVERSION

**CONVERSION KIT:** Contains 3 fabric  
filter envelopes, stainless steel  
mesh insert and clip

**CONVKIT-3**  
40-lb/50-lb GR Fryers

**CONVKIT-2**  
70-lb/90-lb GR Fryers



**REFILL KIT:** Contains 6 fabric  
filter envelopes

**REFILLKIT-3**  
40-lb/50-lb GR Fryers

**REFILLKIT-2**  
70-lb/90-lb GR Fryers



## VEG & LG SERIES | ACCESSORIES

### FIELD-INSTALLED ACCESSORIES

#### SINGLE BASKETS



**VBASKET-SINGLE**  
VEG35 & LG300 Fryers

**BASKET-1TK65**  
LG500 Fryers

#### TWIN BASKETS



**BASKETS-TWINRD**  
VEG35 & LG300 Fryers

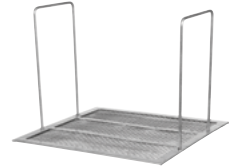
**BASKETS-TWIN65**  
LG500 Fryers

#### TRI BASKETS



**BASKETS-TRI65**  
LG500 Fryers

#### CRUMB SCREEN



**CRUMB-SCREEN**  
VEG35 & LG300 Fryers

**45CRUMB-SCREEN**  
LG400 Fryers

**65CRUMB-SCREEN**  
LG500 Fryers

#### HOSE

4' Long gas flex hose and quick disconnect freestanding fryers



**3/4QD-HOSE-4**  
¾" x 4' - all VEG/LG Fryers

**11/4QDH-4FT**  
1¼" x 4' - all VEG/LG Fryers

#### CASTERS

Adjustable Casters - 2 Swivel Non-Locking & 2 Swivel Locking



**CASTERS-PLTMNT**  
all VEG/LG Fryers

#### SPLASH GUARD

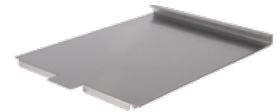
10" High stainless steel removable splash guard each



**VSPGARD-G/E**  
all VEG/LG Fryers

#### TANK COVER

Stainless steel tank cover / work surface top



**COVER-TANK**  
VEG35 & LG300 Fryers

**COVER-TANK65**  
LG500 Fryers

#### CONNECTING KIT

Secures 2 or more fryers together or with a Frymate™; includes grease strip and connecting hardware  
1 connecting kit per 2 fryers



**CONNECT-KITVULPF**  
VEG Fryers

**CONNECT-KITVUL**  
LG Fryers



## FRYMATE™ | DUMP STATION

The Frymate™ is a convenient fry holding station for both gas and electric fryers — either as an "add-on" or stand-alone model. Keep product warm with this easy-to-use fry station.



FRYMATE VX15

### STANDARD FEATURES:

- Stainless steel cabinet
- Stainless steel curved pan to allow for easy removal of food products
- Trouble-free adjustable casters — 2 swivel non-locking and 2 swivel locking
- Storage area behind door
- Can be installed on the left, right or both sides of the fryer

## FRYMATE™ DUMP STATION

Model	Available Field Installed	Dimensions (W x D x H)
FRYMATE VX15	All 35-, 45-, 50- and 70-lb gas or electric fryers	15½" x 30⅞" x 36¼"
FRYMATE VX21S	All 85-lb gas or electric fryers	21" x 34⅜" x 36¼"

NOTE: Each VX15 is shipped with a CONNECTKIT-VUL in the packaging and each VX21S is shipped with a CONNECTKIT-VUL85.

## FIELD-INSTALLED ACCESSORIES

### FRYER TANK COVER

Stainless steel tank cover / work surface top

**COVER-TANK**  
Frymate™ VX15

**COVER-TANK85**  
Frymate™ VX21S



### FOOD WARMER

Infrared Food Warmer 120V (infrared food warming technology radiates uniform heat across surface)

**FOOD-WARMER**  
All Frymate™ Models

