

VCCG SERIES | ACCESSORIES

FIELD-INSTALLED ACCESSORIES

CUTTING BOARD*

Stainless steel cutting board with Sani-Tuff®, 10⁵/₈" depth



- CUTBD-CG24** For VCCG24
- CUTBD-CG36** For VCCG36
- CUTBD-CG48** For VCCG48
- CUTBD-CG60** For VCCG60
- CUTBD-CG72** For VCCG72

(Sani-Tuff® is a resilient material resistant to cracking, splintering and absorption of liquids)

PLATE RAIL*

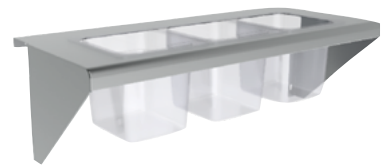
Stainless steel plate rail, 10⁵/₈" depth



- PLTRAIL-CG24** For VCCG24
- PLTRAIL-CG36** For VCCG36
- PLTRAIL-CG48** For VCCG48
- PLTRAIL-CG60** For VCCG60
- PLTRAIL-CG72** For VCCG72

CONDIMENT RAIL*

Stainless steel condiment rail, 10⁵/₈" depth



Pans not included

- CONRAIL-CG24** For VCCG24
Capacity: (3) 1/8 Pans or (1) 1/2 Pan
- CONRAIL-CG36** For VCCG36
Capacity: (5) 1/8 Pans or (2) 1/2 Pans
- CONRAIL-CG48** For VCCG48
Capacity: (7) 1/8 Pans or (3) 1/2 Pans
- CONRAIL-CG60** For VCCG60
Capacity: (8) 1/8 Pans or (4) 1/2 Pans
- CONRAIL-CG72** For VCCG72
Capacity: (10) 1/8 Pans or (5) 1/2 Pans

*Cutting board, plate rail and condiment rail are incompatible with rear grease trough griddles.

Accessory Code	Available on	Description
BANKING-STRIP	All VCCG	Griddle Banking Strip
TRANSF-900RE	All VCCG	Transformer 220V to 120V
EXTENSION-CHUTE	All VCCG	Chute replaces grease can for operations producing excessive grease and using a bucket for drainage. <i>Must be used with IStand/C-CG.</i>

UNIVERSAL EQUIPMENT STANDS

30" Depth stainless steel stand with 1/2" marine edge and 5" casters (deck height is 24" from floor level).

- STAND/C-24** All 24" Countertop Equipment
- STAND/C-36** All 36" Countertop Equipment
- STAND/C-48** All 48" Countertop Equipment
- STAND/C-60** All 60" Countertop Equipment
- STAND/C-72** All 72" Countertop Equipment

