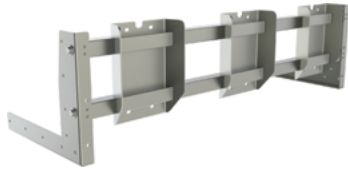


VMCS | MANUAL CLAMSHELL GRIDDLE OPTIONS & ACCESSORIES

FIELD-INSTALLED ACCESSORIES

MOUNTING FRAME

Mounting frame
Required for mounting clamshell to griddle



For 900RX, MSA, HEG(E), RRE(E) Griddles:

- FRAME-VMCS24** (24" mounting frame)
- FRAME-VMCS36** (36" mounting frame)
- FRAME-VMCS48** (48" mounting frame)
- FRAME-VMCS60** (60" mounting frame)
- FRAME-VMCS72** (72" mounting frame)

For VCCG Griddles:

- FRAME-VMCS24-CG** (24" mounting frame)
- FRAME-VMCS36-CG** (36" mounting frame)
- FRAME-VMCS48-CG** (48" mounting frame)
- FRAME-VMCS60-CG** (60" mounting frame)
- FRAME-VMCS72-CG** (72" mounting frame)

ROTARY GAP ADJUSTMENT

Easy-to-use rotary gap adjustment allows customization to height of menu items



GADJUST-ROTARY

For VMCS-101 & VMCS-201



TEFLON SHEETS

Teflon non-stick release sheets, qty 10

TEFLON-KIT10B

For VMCS-101 & VMCS-201

FACTORY-INSTALLED OPTION

Accessory Code	Description	Available on
VMCS-101FM	Factory staff will mount VMCS to new griddle on original PO, mounting frame purchase is required	VCCG, 900RX, MSA, HEG(E), RRE(E)
VMCS-201FM		VCCG, 900RX, MSA, HEG(E), RRE(E)