

## RRE SERIES | *Rapid Recovery™ Composite Plate Griddle.*

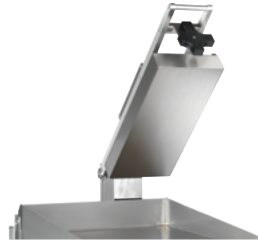
*The Rapid Recovery™ Composite Plate Griddle with 304 Series stainless steel cooking surface supports high-volume kitchen applications while achieving high-capacity, consistent results.*

### STANDARD FEATURES:

- True “corner-to-corner” temperature control across cooking surface to maximize production capacity
- Rapid Recovery™ composite griddle plate (≈¾") delivers fast and uniform heat
- 304 Series stainless steel cooking surface is easy to clean and reduces labor and flavor transfer between foods
- Available in 208 or 240V, 50-60 Hz, 1 or 3 Phase power supply and 480V, 50-60 Hz, 3 Phase
- Snap-action thermostatic controls and heating elements every 12" with temperature control from 200–450°F
- 4" heavy duty adjustable legs
- Cool bull nose design keeps the front rail cool to the touch at all times



**RRE36E**

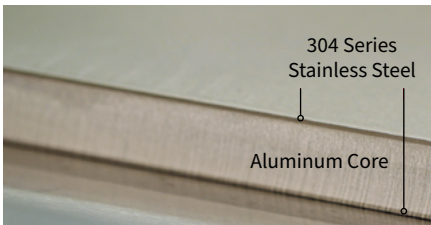


RRE models are **Vulcan Manual Clamshell (VMCS)** compatible

### RRE SERIES GRIDDLES

Model	Dimensions (W x D x H)	Cooking Height	Total kW	No. of Drawers
RRE24E	24" x 31½" x 15¼"	11⅞"	10.8	1
RRE36E	36" x 31½" x 15¼"	11⅞"	16.2	1
RRE48E	48" x 31½" x 15¼"	11⅞"	21.6	1

Contact factory for 380-415V options.



Composite Plate with Aluminum Core and 304 Series Stainless Steel Surface.

### **Exclusive Rapid Recovery™ composite plate material**

Corner-to-corner temperature control and even heat distribution allows users to cook to perfection on every inch of this griddle’s surface.

Scan to learn more about Rapid Recovery technology

