

ENDURANCE™ SERIES | FIELD-INSTALLED ACCESSORIES

STUB RISER 4"

Stainless steel
backguard flue
riser, 4" stub back



- STUB4-XL24** For 24" range
- STUB4-XL36** For 36" range
- STUB4-XL48** For 48" range
- STUB4-XL60** For 60" range
- STUB4-XL72** For 72" range

STUB RISER 10"

Stainless steel
backguard flue riser,
10" stub back



- STUB10-XL24** For 24" range
- STUB10-XL36** For 36" range
- STUB10-XL48** For 48" range
- STUB10-XL60** For 60" range
- STUB10-XL72** For 72" range

REINFORCED HIGH SHELF

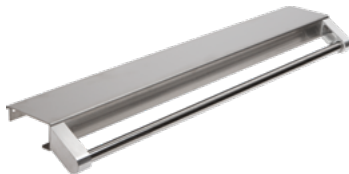
Multi-functional stainless steel
shelf to mount a salamander or
cheesemelter above the range,
or for extra storage space for
frequently used items



- RSHELF-XL24** For 24" range
- RSHELF-XL36** For 36" range
- RSHELF-XL48** For 48" range
- RSHELF-XL60** For 60" range
- RSHELF-XL72** For 72" range

TOWEL BAR

Stainless steel bar allows for
conveniently hanging towels,
oven mitts or other kitchen items



- RCTWLBR-24** For 24" range
- RCTWLBR-36** For 36" range
- RCTWLBR-48** For 48" range
- RCTWLBR-60** For 60" range
- RCTWLBR-72** For 72" range

EXTRA OVEN RACK

Extra oven rack
with guides



- OVNRACK-XL20**
For 24", 48" & 60" range
- OVNRACK-XL26**
For 36", 48" 60" & 72" range

FRYER SHIELD

Stainless steel fryer shield to
protect from grease splatters



- SHIELD-FRYLH** (Left)
- SHIELD-FRYRH** (Right)
- For all size ranges