

VCCB SERIES (LOW PROFILE) | A Winning Charbroiler for Kitchens of All Sizes.

STANDARD FEATURES:

- Powerful 14,500 BTU/hr burner in each 6" broiler section
- Heavy duty cast iron burners, radiants and grates provide exceptional durability
- 4" adjustable legs
- Deflector panels below burners focus heat into cooking — design keeps crumb tray cool and protects refrigerated bases
- Easy-to-light design, standing pilot ignition



VCCB47

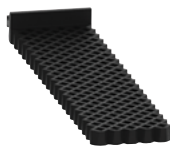
VCCB SERIES GRIDDLES

Model	Dimensions (W x D x H)	Cooking Height	Total BTU/hr	Grates
VCCB25	25¼" x 27¼" x 14¾"	13"	58,000	4
VCCB36	36" x 27¼" x 14¾"	13"	87,000	6
VCCB47	46¾" x 27¼" x 14¾"	13"	116,000	8
VCCB60	60" x 27¼" x 14¾"	13"	159,500	11
VCCB72	72" x 27¼" x 14¾"	13"	188,500	13

FIELD-INSTALLED ACCESSORIES

WAFFLE GRATE

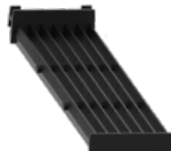
Cast iron crisscross grate design



GRATE-WAFFLE
All VCCB / VCRB

DIAMOND GRATE

Cast iron diamond grate



GRATE-CDIA7
All VCCB / VCRB

SS DIAMOND GRATE

Stainless steel diamond grate



GRATE-SSDIA7
All VCCB / VCRB

ROUND ROD GRATE

½" Round rod, 6" wide section



GRATE-RROD7
All VCCB / VCRB

SPLASH KIT

6" Add-on splash guard sides and back (not compatible with overshef)

SPLASH6-CB25 For VCCB25

SPLASH6-CB36 For VCCB36

SPLASH6-CB47 For VCCB47

SPLASH6-CB60 For VCCB60

SPLASH6-CB72 For VCCB72

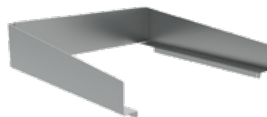


PLATE RAIL

Stainless steel plate rail, 10⅝" depth

PLTRAIL-VCCBB25 For VCCB25

PLTRAIL-VCCBB36 For VCCB36

PLTRAIL-VCCBB47 For VCCB47

PLTRAIL-VCCBB60 For VCCB60

PLTRAIL-VCCBB72 For VCCB72

