

# Undercounters

## SIDE MOUNTED CONDENSING UNIT (ET SERIES)

Refrigerators / Freezers / Dual Temps



The Side Mounted Undercounter series is designed to fit under counters or be used as a tabletop workspace. Its front-breathing condensing unit allows installation against walls. It comes in solid or glass door and drawer variations. A compact, 24" deep version is available for smaller kitchens.



**Front Breathing**

Allows installation against walls.



**Blizzard R290**

EPA/DOE approved, all-in-one, slide-out cooling cartridge.



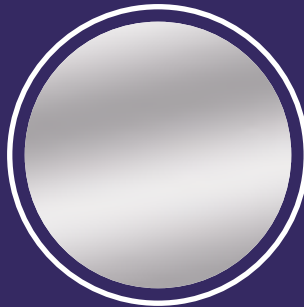
**Digital Control**

Easy settings with audio and visual overheat alarm.



**ECM Fan Motors**

Electronically commutated motors require less energy.



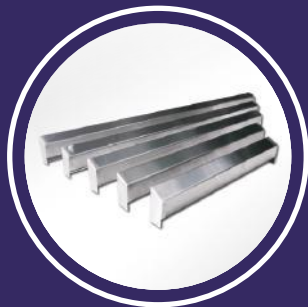
**All Stainless Steel**

High quality finish with 2.5" thick thermal insulation.



**Vacuum Relief**

Equalizes cabinet pressure for smooth door re-entry.



**Optional Backsplash**

Pre-installed & sealed 4" high stainless steel barrier.



**Optional Overshelf**

Stainless steel double overshelf for additional storage.



**Other Features**

LED lighting, lockable door, 3" or 5" swivel casters.

# Side Mount Glass Door Undercounter Refrigerators – ET Series

## Side Mounted Condensing Unit



ETGSR2



ETGR2



ETGWR2

### Cabinet Construction

- Heavy duty stainless steel interior / exterior with rounded corners for a hazard-free workspace.
- Open spaced interior with no walls between compartments.
- 16 gauge, high quality stainless steel worktop.
- Galvanized steel bottom and rear.
- 2.5" thick high density polyurethane insulation.
- Four 5" swivel casters with locks on front set.

### Refrigeration System

- Side mounted, self-contained and fully detachable Blizzard R290 condensing unit uses environmentally friendly, EPA-compliant R290 refrigerant with zero (0) Ozone Depletion Potential (ODP) and three (3) Global Warming Potential (GWP). Blizzard R290 is easily replaceable and requires no on-site brazing.
- Electronically commutated (ECM) fan motors achieve rapid cooling with less energy consumption.
- Full-length air duct ensures optimal cold air circulation.
- Time-initiated and temperature-terminated auto defrost cycle for seamless operation.
- Large capacity, corrosion-resistant condenser and evaporator coils.
- Self-maintaining, energy-efficient condensate drain pan requires no external drains or electric heaters.
- High performance, auto-reverse condenser fan motor supports compressor ventilation and condenser coil cleaning.
- Pressure relief devices allow rapid cabinet re-entry.
- Pre-wired and ready to plug, 115V/60Hz/1Ph, NEMA 5-15P.

### Lighting

- Energy efficient silicone coated and shatter-proof LED lighting provides bright, high color illumination with low heat output.

### Doors

- Low emissivity double glass panes reflect UV rays for efficient cooling.
- Gray PVC frames.
- Self-closes by weight.
- Removable doors and stainless steel door tracks for easy cleaning.
- Pre-installed locks keep your items safe from theft.

### Shelving

- Two epoxy coated, steel wire shelves per section.
- Height adjustable stainless steel clips.

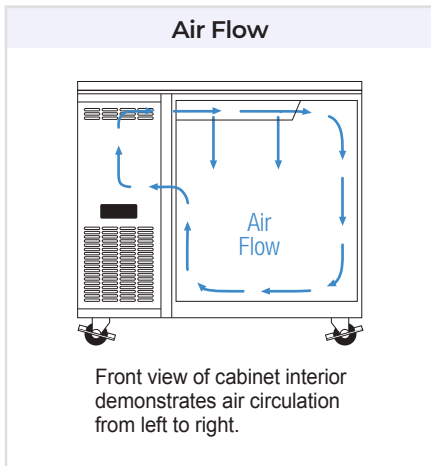
### Temperature Control

- Multi-function digital controller with easy to read LED display.
- Factory preset temperature, 35°F. Temp-set range from 33°F to 54°F.
- Audible overheat protection alarm for compressor and condenser coil.

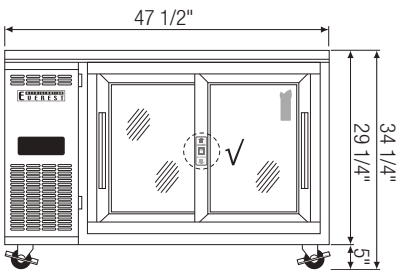
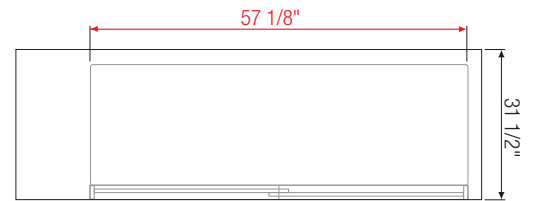
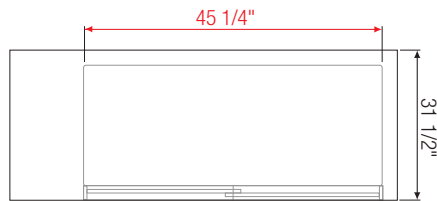
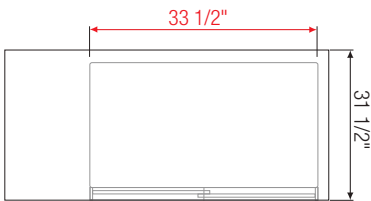
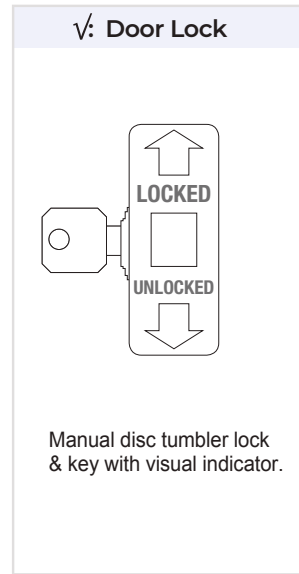
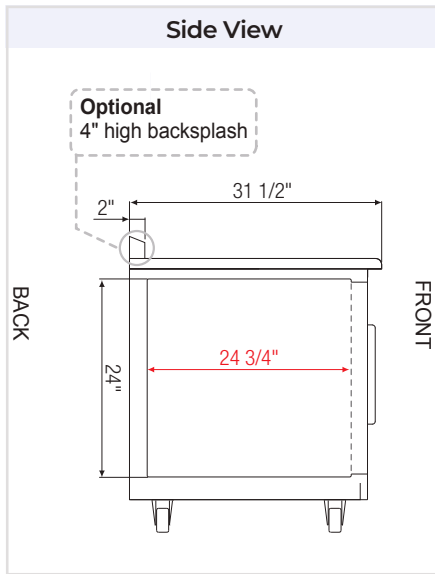
### Options

- 4" high stainless steel backsplash for worktop application.
- NSF certified stainless steel double overshelf. Additional shelving.
- 3" swivel casters with locks.
- 3.5" – 6" height-adjustable and interchangeable legs.

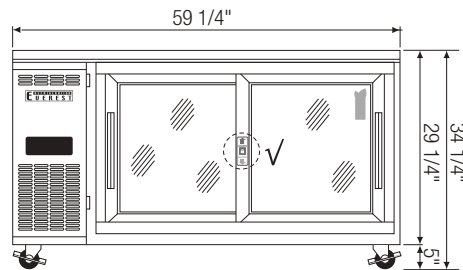
↔ = Interior Dimensions   ← → = Exterior Dimensions



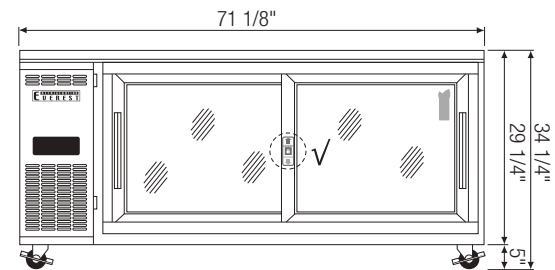
Equipped with 9 ft long NEMA 5-15P plug.



ETGSR2



ETGR2



ETGWR2

Model	Ref/ Frz/ Dual	# of Doors	Capacity <sup>†</sup> (Cu. Ft.)	HP	BTU/HR <sup>†</sup>	Refrigerant	# of Shelves	Power (V-Hz-Ph)	Amps	Crated Weight (LBS)	Exterior Dimensions (Inches)		
											L	D	H*
ETGSR2	Ref	2 (sliding)	13	1/3	2,311	R290	4	115-60-1	2	268	47 1/2	31 1/2	29 1/4
ETGR2	Ref	2 (sliding)	18	1/3	2,311	R290	4	115-60-1	2	308	59 1/4	31 1/2	29 1/4
ETGWR2	Ref	2 (sliding)	22	1/3	2,311	R290	4	115-60-1	2	351	71 1/8	31 1/2	29 1/4

\* Height does not include 5" for casters.

† Based on evaporating temperature of 23°F (-5°C) & condensing temperature of 131°F (55°C).

Specifications subject to change without notice.

Product dimensions are for general purposes and not absolute value. Product capacity (†) is calculated based on standard industry figures. Slight variations may exist. If dimensions and capacity are critical, please contact Everest Refrigeration.

Ref = Refrigerator