

Project Name	Location	Item #	Quantity	Model #	AIA #	SIS #
--------------	----------	--------	----------	---------	-------	-------

Photo Not Yet Available

FEATURES

- R290 Hydrocarbon refrigerant.
- Maintains temperature of 35°F (1.7°C).
- Exterior: Black powder coated cold rolled steel with stainless steel countertop.
- Interior: Stainless steel floor with heavy gauge galvanized steel walls.
- Each Door fitted with 12" (305mm) long recessed handle that is foamed-in-place with a sheet metal interlock to ensure permanent attachment.
- True's self-cleaning RCU technology eliminates the need to clean the condenser coil, reduces energy consumption and helps maintain the coldest temperatures and freshest product.
- LED interior lighting.
- NSF/ANSI Standard 7 compliant for the storage and/or display of packaged or bottled product.
- Recommended 1" clearance side and back
- UL Rated for outdoor use.

ROUGH-IN DATA

Specifications subject to change without notice. Chart dimensions rounded up to the nearest 1/8" (millimeters rounded up to next whole number).

Model	Doors	Shelves	Capacity			Cabinet Dimensions (inches) (mm)			115V/60/1 Voltage			Cord Length‡ (total ft.) (total m)	Crated Weight (lbs.) (kg)
			12 oz. Cans	12 oz. Bottles	1/6 Barrels	W	D	H*	HP	Amps	NEMA		
TBB24-48-2S-Z1-SFT-B-1	2	4	76 6-pks	43 6-pks	6	48 ⁷ / ₈ 1220	24 ⁷ / ₈ 632	34 ³ / ₄ 882	¹ / ₂	1.8	5-15P	10 3.04	290 132

*Height does not include 1/4" (7 mm) for leg levelers.

‡ Cord length listed represents usable cord length.

	APPROVALS	AVAILABLE AT
--	-----------	--------------



115/60/1
NEMA-5-15R

Unit completely pre-wired at factory and ready for final connection to a 115/60/1 phase, 15 amp dedicated outlet. Cord and plug set included.

ADDITIONAL FEATURES

Refrigeration System

- Factory engineered, self-contained, capillary tube system.
- Environmentally friendly R290 hydrocarbon refrigerant.
- Forced air refrigeration system which maintains 35°F (1.7°C) product temperature.
- True's self-cleaning RCU technology eliminates the need to clean the condenser coil, reduces energy consumption and helps maintain the coldest temperatures and freshest product.

Cabinet Construction

- Exterior: Black, powder coated cold-rolled steel with stainless steel countertop.
- Interior: Stainless steel floor with heavy gauge galvanized steel walls.
- Insulation: Entire cabinet is foamed-in-place using a high density, polyurethane insulation that has zero ozone depletion and zero global warming potential.
- Base fitted with leg levelers.

Doors

- Glvanized steel door liner.
- Each Door fitted with 12" (305mm) long recessed handle that is foamed-in-place with a sheet metal interlock to ensure permanent attachment.
- Door locks standard.

Shelving

- Four (4) adjustable, gray PVC coated wire shelves. 15½" W x 18" D (394 mm x 458 mm). Four (4) chrome plated shelf clips included per shelf.
- Aluminum shelf support pilasters. Shelves are adjustable on ½" (13 mm) increments.

Model Features

- NSF/ANSI Standard 7 compliant for the storage and/or display of packaged or bottled product.
- Electronic control.
- UL approved for outdoor use.

Electrical

- Unit completely pre-wired at factory and ready for final connection to a 115/60/1 phase, 15 amp dedicated outlet. Cord and plug set included.

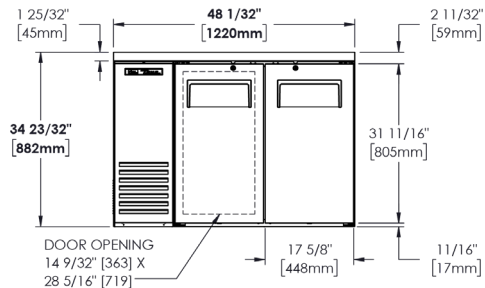
Optional Features/Accessories

(upcharge and lead times may apply)

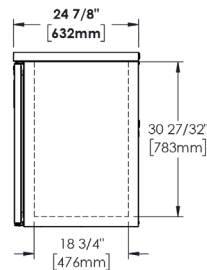
- Castors 7/8" (23mm), 2"D (51mm), 3"D (77mm), 4"D (102mm), 5"D (127mm) castors
- 6"H (153mm) legs
- 6"H (153mm) seismic legs
- Additional shelves
- One liter or wine bottle organizers
- Bottle Organizers (available in black or gray)

PLAN VIEWS

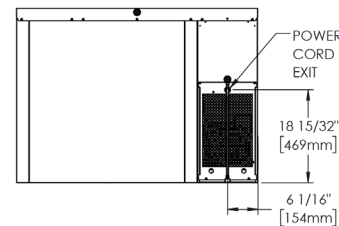
Plan View Notes: Dimensions in brackets are in millimeters. • Height does not include ¼" (7 mm) for leg levelers.



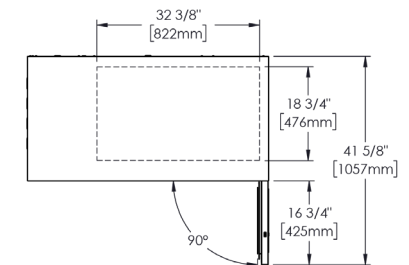
FRONT VIEW



SIDE VIEW



BACK VIEW



TOP VIEW