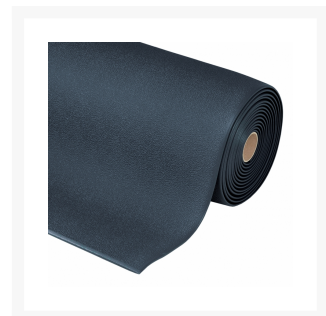

9/16" x 3' x 12', Black, Sof-Tred™ Anti Fatigue Mat, 411

Product Images





Short Description

- Non-directional pebble-texture embossed mat
- Basic anti-fatigue protection provided
- Closed cell PVC foam relieves leg and back discomfort
- Provides an insulated barrier to cold floors
- Beveled edges on all 4 sides

Description

Sof-Tred™ anti fatigue foam mat has an embossed pebble-texture top surface that enhances the mat's slip resistance while providing increased basic worker fatigue relief. The PVC closed cell foam construction relieves leg and back discomfort while providing a barrier to cold floors. Sof-Tred™ is intended for applications where basic anti-fatigue relief is required at a low cost.

Specifications

Model No	411S4312BL
Color	Black
Dimensions	3ft x 12ft
Thickness	9/16in
UPC	662641675193
Special Price Type	Sale
Available Colors	Black; Black/Yellow; Blue; Gray
Roll Sizes	2'x60', 3'x60', 4'x60', 6'x60'
Custom Lengths	2', 3' and 4' widths (up to 60' long)
Standard sizes	2'x3', 3'x5', 3'x12'
Group	Ergonomic, Anti-fatigue & Safety Matting
Environment	Dry Areas
Special Characteristics	Free of DOP, free of DMF, free of ozone depleting substances, free of silicone and free of heavy metals
Recommended Use	For placement in manufacturing plants, assembly lines, picking, packing and logistics warehouses, individual work stations.
Special Remarks	Where basic anti-fatigue and anti-slip properties are needed at a low cost
Surface	Structured Pebble Pattern
Edges	Beveled edges on all sides
Usage Intensity	Light duty
Custom Description	Available in stock and rolls sizes and in custom lengths. Available colors in black/yellow and black.
Material Specifications	Closed Cell Polyvinylchloride
Backing	Closed Cell Polyvinylchloride
Process	Foaming
Weight Lbs/sqft	0.53

Thickness Inch	9/16in
Fire Rating US	Pass
REACH Compliant	Reach compliant (Registration, Evaluation, Authorization and Restriction of Chemicals).
Anti-Fatigue Rating	Good
Slip Resistance Rating	Good
Wear Resistance Rating	Good