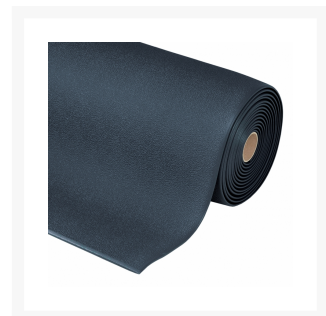

3/8" x 2' x 60', Black, Sof-Tred™ Anti Fatigue Mat, 411

Product Images





Short Description

- Non-directional pebble-texture embossed mat
- Basic anti-fatigue protection provided
- Closed cell PVC foam relieves leg and back discomfort
- Provides an insulated barrier to cold floors
- Beveled edges on all 4 sides

Description

Sof-Tred™ anti fatigue foam mat has an embossed pebble-texture top surface that enhances the mat's slip resistance while providing increased basic worker fatigue relief. The PVC closed cell foam construction relieves leg and back discomfort while providing a barrier to cold floors. Sof-Tred™ is intended for applications where basic anti-fatigue relief is required at a low cost.

Specifications

| | |
|-------------------------|-----------------------------------------------------------------------------------------------------------------------------|
| Model No | 411R0324BL |
| Color | Black |
| Dimensions | 2ft x 60ft |
| Thickness | 3/8in |
| UPC | 662641638877 |
| Special Price Type | Sale |
| Available Colors | Black; Black/Yellow; Blue; Gray |
| Roll Sizes | 2'x60', 3'x60', 4'x60', 6'x60' |
| Custom Lengths | 2', 3' and 4' widths (up to 60' long) |
| Standard sizes | 2'x3', 3'x5', 3'x12' |
| Group | Ergonomic, Anti-fatigue & Safety Matting |
| Environment | Dry Areas |
| Special Characteristics | Free of DOP, free of DMF, free of ozone depleting substances, free of silicone and free of heavy metals |
| Recommended Use | For placement in manufacturing plants, assembly lines, picking, packing and logistics warehouses, individual work stations. |
| Special Remarks | Where basic anti-fatigue and anti-slip properties are needed at a low cost |
| Surface | Structured Pebble Pattern |
| Edges | Beveled edges on all sides |
| Usage Intensity | Light duty |
| Custom Description | Available in stock and rolls sizes and in custom lengths. Available colors in black/yellow and black. |
| Material Specifications | Closed Cell Polyvinylchloride |
| Backing | Closed Cell Polyvinylchloride |
| Process | Foaming |
| Weight Lbs/sqft | 0.53 |

| | |
|------------------------|-----------------------------------------------------------------------------------------|
| Thickness Inch | 3/8in |
| Fire Rating US | Pass |
| REACH Compliant | Reach compliant (Registration, Evaluation, Authorization and Restriction of Chemicals). |
| Anti-Fatigue Rating | Good |
| Slip Resistance Rating | Good |
| Wear Resistance Rating | Good |