



STAINLESS STEEL ADD-A-TIER DRAWERS

Fits Under 24", 30" and 36" Wide Open Base Work Tables!

FEATURES:

Units come Fully Assembled!

Stainless Steel Drawers feature **SHD Series Drawers** with Integral drawer slides & removable stainless steel drawer inserts.
Includes 2 or 3 drawers with 2 Concealed Side Panels (See Photos).
Drawer "Safety Stop" tab.
Mounts from underside of Open Base Table with Included Hardware.

CONSTRUCTION:

All TIG welded.

MECHANICAL:

Roller bearing slides, drawer enclosure and removable drawer inset.
Self closing drawer with noise control.

MATERIAL:

Heavy gauge type 430 series stainless steel.



ADT-3-2020 SERIES SHOWN
(Table not included)

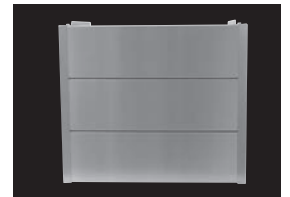
INCLUDES 2 CONCEALED SIDE PANELS



2 Drawer Concealed Panel
Model ADT-2-2020 Shown



3 Drawer Concealed Panel
Model ADT-3-2020 Shown



Rear View of Stacked Drawers
Drawer Seams Exposed

Model #	Description	Weight
ADT-2-2020	2 Tier Drawers	87 lbs.
ADT-3-2020	3 Tier Drawers	105 lbs.
ADT-3-2015	3 Tier Drawers	85 lbs.

STAINLESS STEEL

FACTORY INSTALLED "SHD SERIES" TIER DRAWERS

(FACTORY INSTALLATION ONLY)

FEATURES:

3-Tier Drawers factory installed.
1 5/8" diameter tubular stainless steel legs & gussets.
Stainless Steel Drawers feature **SHD Series Drawers** with Integral Drawer Slides & removable stainless steel drawer inserts.
Drawer "Safety Stop" tab.

CONSTRUCTION:

All TIG welded.
Legs bolt on to table base.

MECHANICAL:

Roller bearing slides, drawer enclosure and removable drawer insert.
Self closing drawer with noise control.

MATERIAL:

Heavy gauge type 430 series stainless steel.
LEGS are stainless steel and include 1 1/2" adjustable hex foot.

Model #	Description	Weight
TA-38	3-Tier Drawers	130 lbs.
TA-384	4-Tier Drawers	165 lbs.

For Tier Drawers on 24" Wide Enclosed Base Tables,
Add **TA-380** (Drawers will be 20" x 15" x 5")

**New 4 Tier Unit Offers
33% Greater Storage, within the
Same Overall Dimension!**



FEATURING BOLT-ON
STAINLESS STEEL LEG



TA-38 SHOWN



Customer Service Available To Assist You **1-800-645-3166** 8:30 am - 7:00 pm E.S.T.

For Orders & Customer Service:

Email: customer@advancetabco.com or Fax: 631-242-6900

For Smart Fabrication™ Quotes:

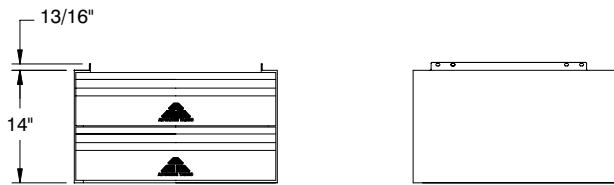
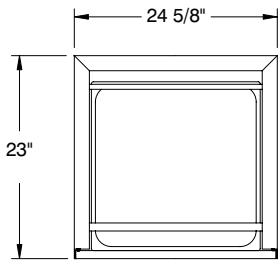
Email: smartfab@advancetabco.com or Fax: 631-586-2933

DETAILS and SPECIFICATIONS

TOL ± .500"

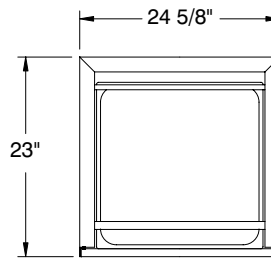
ALL DIMENSIONS ARE TYPICAL

ADT-2-2020

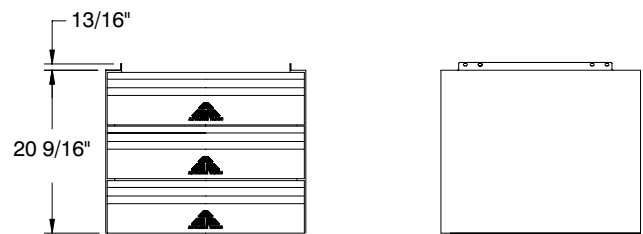
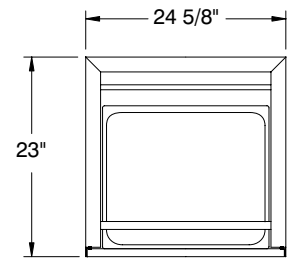


ADT-3-2015 ADT-3-2020

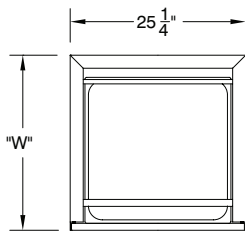
TOP VIEW OF
ADT-3-2020



TOP VIEW OF
ADT-3-2015

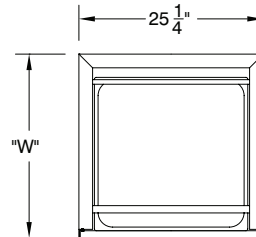


TA-38 THREE TIER UNIT



"W" Dimension is
Based on Table Width

TA-384 FOUR TIER UNIT



"W" Dimension is
Based on Table Width

