

# Commercial Sinks

Sinks



CS-1818-LR-LF



CS-2424-LR-LF



CS-1818-L-LF



CS-1818-R-LF



CS-2424-2-LR-LF



CS-1818-3-LR-LF

## Standard Features

- 304 stainless steel construction
- Includes integrated drainboards
- Welded bowls for added durability
- 18 gauge stainless steel
- 304 stainless steel legs with plastic bullet feet

## Specifications

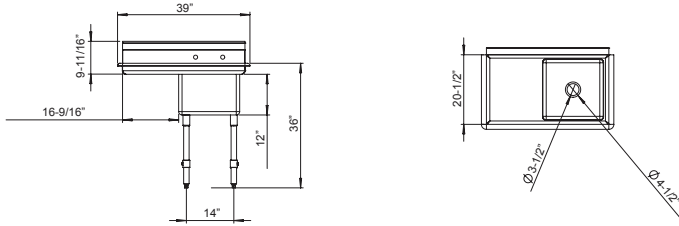
Material	<ul style="list-style-type: none"> <li>● 304 stainless steel</li> <li>● 18 gauge stainless steel</li> </ul>
Drain	<ul style="list-style-type: none"> <li>● 4-1/2" drain</li> </ul>
Bowl Size	<ul style="list-style-type: none"> <li>● CS-1818: 18" x 18"</li> <li>● CS-2424: 24" x 24"</li> </ul>
Backsplash Height	<ul style="list-style-type: none"> <li>● 9-11/16"</li> </ul>

Model	Length	Depth	# of Sinks	Height
CS-1818-L-LF	39"	24"	1	43"
CS-1818-R-LF	39"	24"	1	43"
CS-1818-LR-LF	54"	24"	1	43"
CS-1818-3-LR-LF	90"	24"	3	43"
CS-2424-LR-LF	72"	30"	1	43"
CS-2424-2-LR-LF	96"	30"	2	43"

# Commercial Sinks

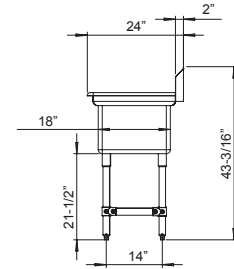
Sinks

**39" Sink with Left Side Intergraded Drain Pan**  
CS-1818-L-LF

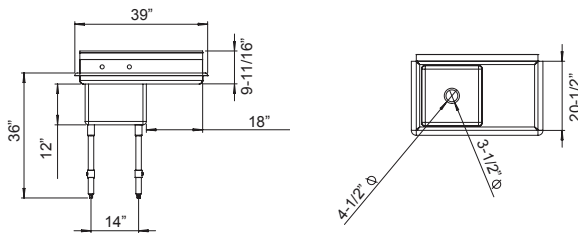


**Sink Side View**

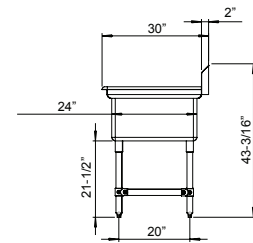
Applies to all CS-1818 Models



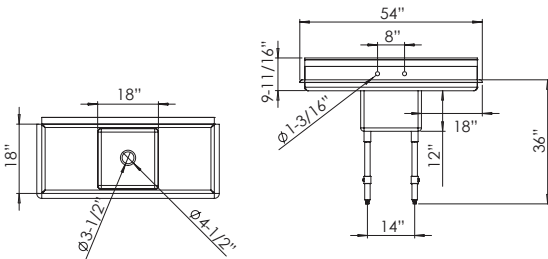
**39" Sink with Right Side Intergraded Drain Pan**  
CS-1818-R-LF



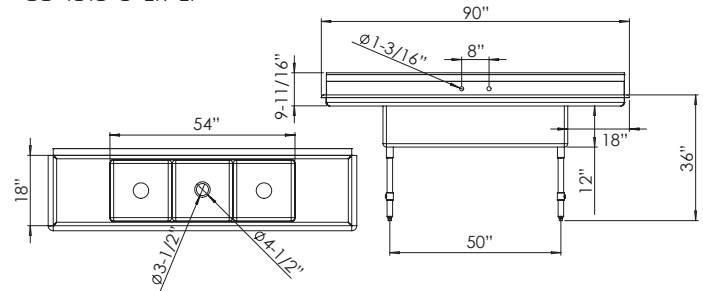
Applies to all CS-2424 Models



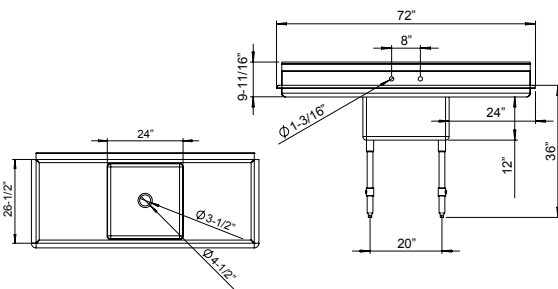
**54" Sink with Intergraded Drain Pans**  
CS-1818-LR-LF



**90" Sink with Intergraded Drain Pans**  
CS-1818-3-LR-LF



**72" Sink with Intergraded Drain Pans**  
CS-2424-LR-LF



**96" Sink with Intergraded Drain Pans**  
CS-2424-2-LR-LF

