

Commercial Sinks

Sinks



CS-1818-LR-LF



CS-2424-LR-LF



CS-1818-L-LF



CS-1818-R-LF



CS-2424-2-LR-LF



CS-1818-3-LR-LF

Standard Features

- 304 stainless steel construction
- Includes integrated drainboards
- Welded bowls for added durability
- 18 gauge stainless steel
- 304 stainless steel legs with plastic bullet feet

Specifications

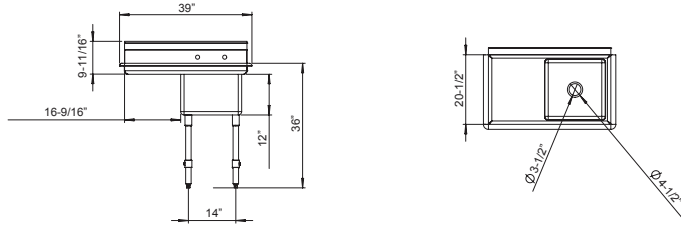
| | |
|-------------------|---|
| Material | <ul style="list-style-type: none"> ● 304 stainless steel ● 18 gauge stainless steel |
| Drain | <ul style="list-style-type: none"> ● 4-1/2" drain |
| Bowl Size | <ul style="list-style-type: none"> ● CS-1818: 18" x 18" ● CS-2424: 24" x 24" |
| Backsplash Height | <ul style="list-style-type: none"> ● 9-11/16" |

| Model | Length | Depth | # of Sinks | Height |
|-----------------|--------|-------|------------|--------|
| CS-1818-L-LF | 39" | 24" | 1 | 43" |
| CS-1818-R-LF | 39" | 24" | 1 | 43" |
| CS-1818-LR-LF | 54" | 24" | 1 | 43" |
| CS-1818-3-LR-LF | 90" | 24" | 3 | 43" |
| CS-2424-LR-LF | 72" | 30" | 1 | 43" |
| CS-2424-2-LR-LF | 96" | 30" | 2 | 43" |

Commercial Sinks

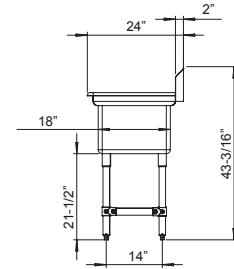
Sinks

39" Sink with Left Side Intergraded Drain Pan
CS-1818-L-LF

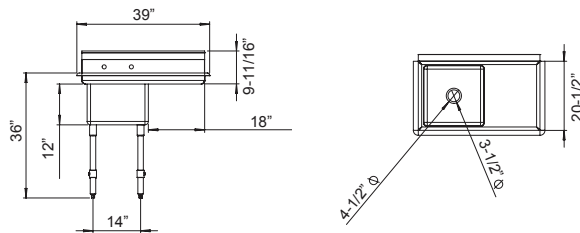


Sink Side View

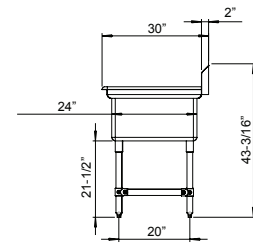
Applies to all CS-1818 Models



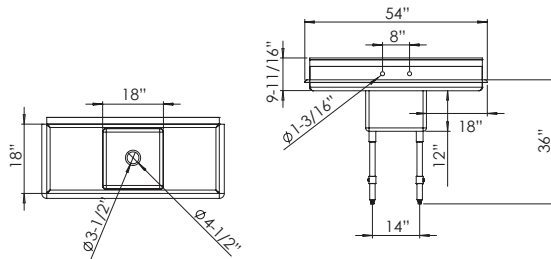
39" Sink with Right Side Intergraded Drain Pan
CS-1818-R-LF



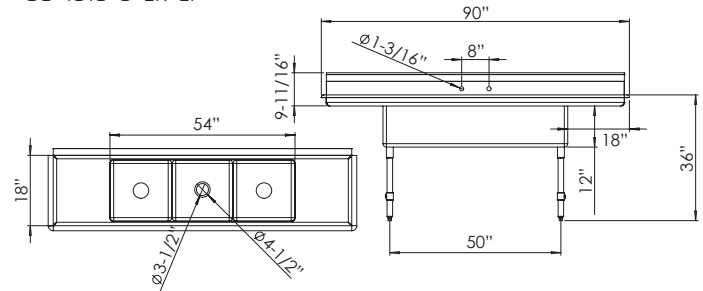
Applies to all CS-2424 Models



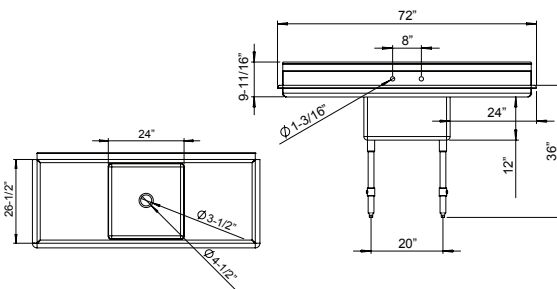
54" Sink with Intergraded Drain Pans
CS-1818-LR-LF



90" Sink with Intergraded Drain Pans
CS-1818-3-LR-LF



72" Sink with Intergraded Drain Pans
CS-2424-LR-LF



96" Sink with Intergraded Drain Pans
CS-2424-2-LR-LF

