

# Commercial Sinks

Sinks



CS-1818-LR-LF



CS-2424-LR-LF



CS-1818-L-LF



CS-1818-R-LF



CS-2424-2-LR-LF



CS-1818-3-LR-LF

## Standard Features

- 304 stainless steel construction
- Includes integrated drainboards
- Welded bowls for added durability
- 18 gauge stainless steel
- 304 stainless steel legs with plastic bullet feet

## Specifications

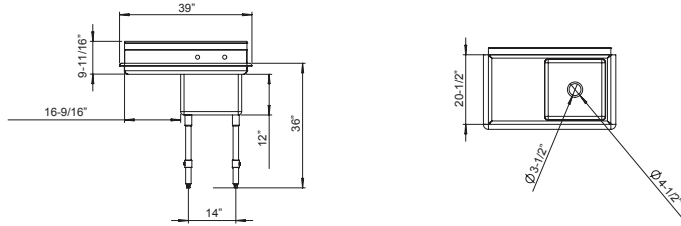
|                   |   |
|-------------------|---|
| Material          | <ul style="list-style-type: none"> <li>● 304 stainless steel</li> <li>● 18 gauge stainless steel</li> </ul> |
| Drain             | <ul style="list-style-type: none"> <li>● 4-1/2" drain</li> </ul>  |
| Bowl Size         | <ul style="list-style-type: none"> <li>● CS-1818: 18" x 18"</li> <li>● CS-2424: 24" x 24"</li> </ul>        |
| Backsplash Height | <ul style="list-style-type: none"> <li>● 9-11/16"</li> </ul>  |

| Model           | Length | Depth | # of Sinks | Height |
|-----------------|--------|-------|------------|--------|
| CS-1818-L-LF    | 39"    | 24"   | 1          | 43"    |
| CS-1818-R-LF    | 39"    | 24"   | 1          | 43"    |
| CS-1818-LR-LF   | 54"    | 24"   | 1          | 43"    |
| CS-1818-3-LR-LF | 90"    | 24"   | 3          | 43"    |
| CS-2424-LR-LF   | 72"    | 30"   | 1          | 43"    |
| CS-2424-2-LR-LF | 96"    | 30"   | 2          | 43"    |

# Commercial Sinks

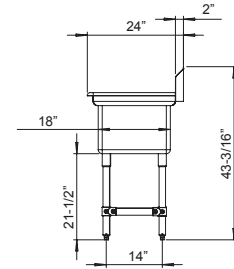
Sinks

**39" Sink with Left Side Intergraded Drain Pan**  
CS-1818-L-LF

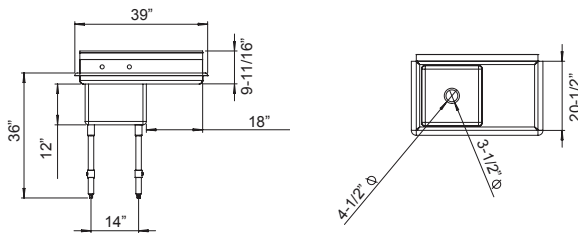


**Sink Side View**

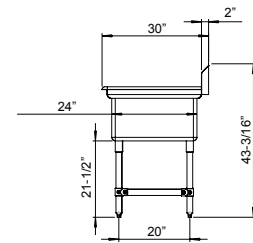
Applies to all CS-1818 Models



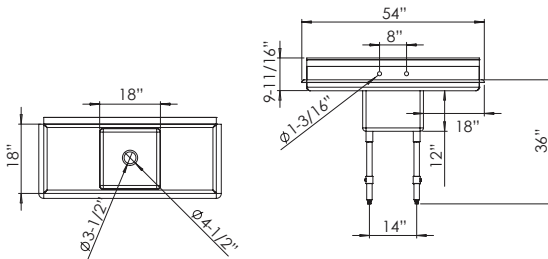
**39" Sink with Right Side Intergraded Drain Pan**  
CS-1818-R-LF



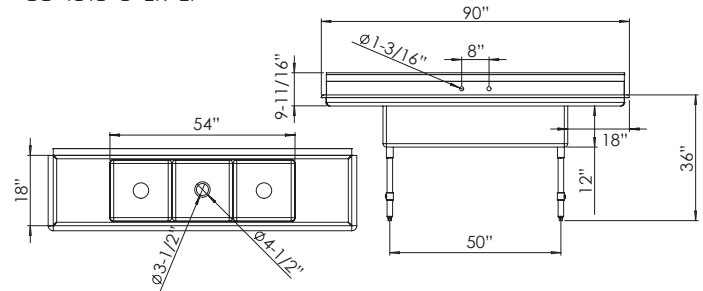
Applies to all CS-2424 Models



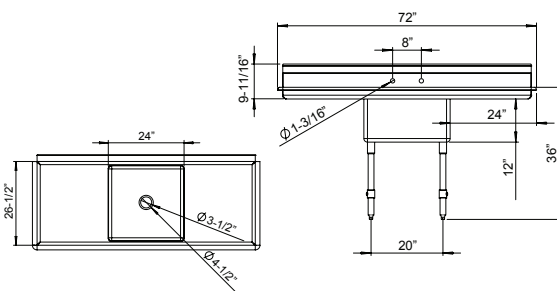
**54" Sink with Intergraded Drain Pans**  
CS-1818-LR-LF



**90" Sink with Intergraded Drain Pans**  
CS-1818-3-LR-LF



**72" Sink with Intergraded Drain Pans**  
CS-2424-LR-LF



**96" Sink with Intergraded Drain Pans**  
CS-2424-2-LR-LF

