



Model: \_\_\_\_\_ Item #: \_\_\_\_\_ Date: \_\_\_\_\_

Project: \_\_\_\_\_ Qty: \_\_\_\_\_ Approved By: \_\_\_\_\_

# Royal Series Two Compartment Bar Sinks

# Royal Series Underbar



**KR19-22C**

## Specifications

- Sink Bowl**
  - 20 gauge stainless steel 10" x 14" x 10" deep
  - Furnished with 1-1/2" IPS rear corner drain and 7-1/2" overflow pipe
- Drainboard**
  - 20 gauge stainless steel reinforced with welded braces every 6"
- Front Apron**
  - 20 gauge stainless steel clad over 20 gauge galvanized steel
- Sides**
  - 20 gauge stainless steel
- Backsplash**
  - 20 gauge stainless steel
- Back & Bottom**
  - 20 gauge galvanized steel
- Legs**
  - 1-5/8" tubular 16 gauge stainless steel with grey plastic bullet foot
- Plumbing**
  - Hot/Cold Water: 1/2" IPS
  - Drain: 1-1/2" IPS
- Faucet**
  - 4" OC wall or deck mount faucet and ceramic cartridge valves

## Standard Features

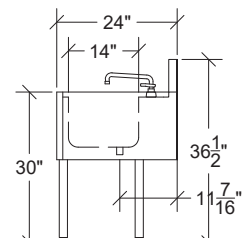
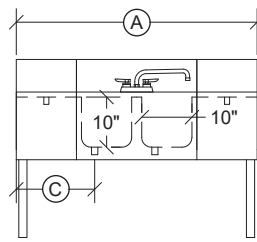
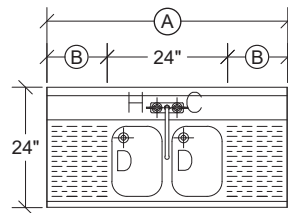
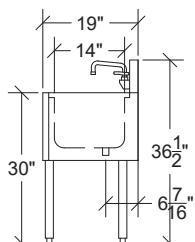
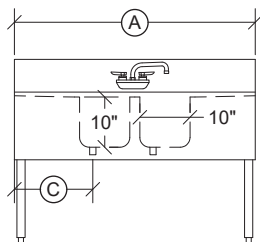
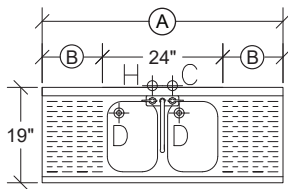
- Royal Series wall mount faucet & drains w/ overflows included
- KR19 includes a wall mount faucet
- KR24 includes deck mount faucet
- 1-1/2" left rear corner drains (Model 23-122)

**WARNING:** Plumbing connections should be made by qualified personnel who will observe all applicable plumbing, sanitary and safety codes.



Model	Depth (Front to Back)	Drainboard Size		Left Side to Drain	Bowls	Bowl Location	Wgt. (lbs.)
		(A)	(B)				
<b>KR19-22C</b>	19"	24"	-	4"	2	Center	50
<b>KR19-32L</b>	19"	36"	12"	4"	2	Left	53
<b>KR19-32R</b>	19"	36"	12"	15"	2	Right	53
<b>KR19-42L</b>	19"	48"	24"	4"	2	Left	55
<b>KR19-42R</b>	19"	48"	24"	21"	2	Right	55
<b>KR19-42C</b>	19"	48"	(2) 12"	27"	2	Center	55

Model	Depth (Front to Back)	Drainboard Size		Left Side to Drain	Bowls	Bowl Location	Wgt. (lbs.)
		(A)	(B)				
<b>KR24-22C</b>	24"	24"	-	4"	2	Center	55
<b>KR24-32L</b>	24"	36"	12"	4"	2	Left	58
<b>KR24-32R</b>	24"	36"	12"	15"	2	Right	58
<b>KR24-42L</b>	24"	48"	24"	4"	2	Left	60
<b>KR24-42R</b>	24"	48"	24"	27"	2	Right	60
<b>KR24-42C</b>	24"	48"	(2) 12"	15"	2	Center	60



**NOTE:** Letter at end of Model Number represents Bowl Location